

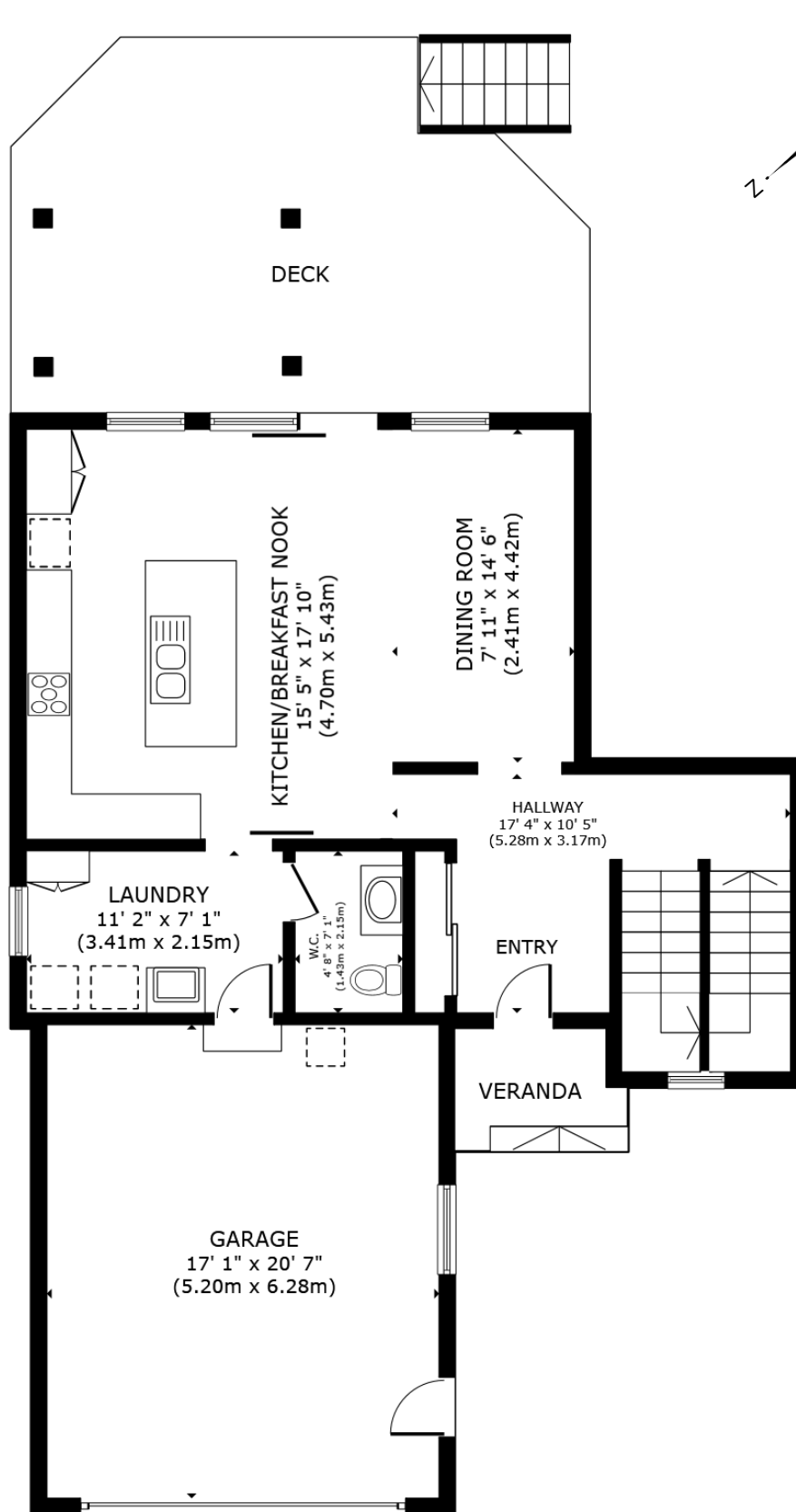
3 McKay Court Dundas, ON

Total Above Grade Interior ft²

Approx Above Ground Interior Area = 1617 ft²

Total Interior ft²

Approx Interior Area (basement included) = 2648 ft²



Ground Floor

(above grade, Garage not included in total ft²)

Approx Interior Area = 743 ft²

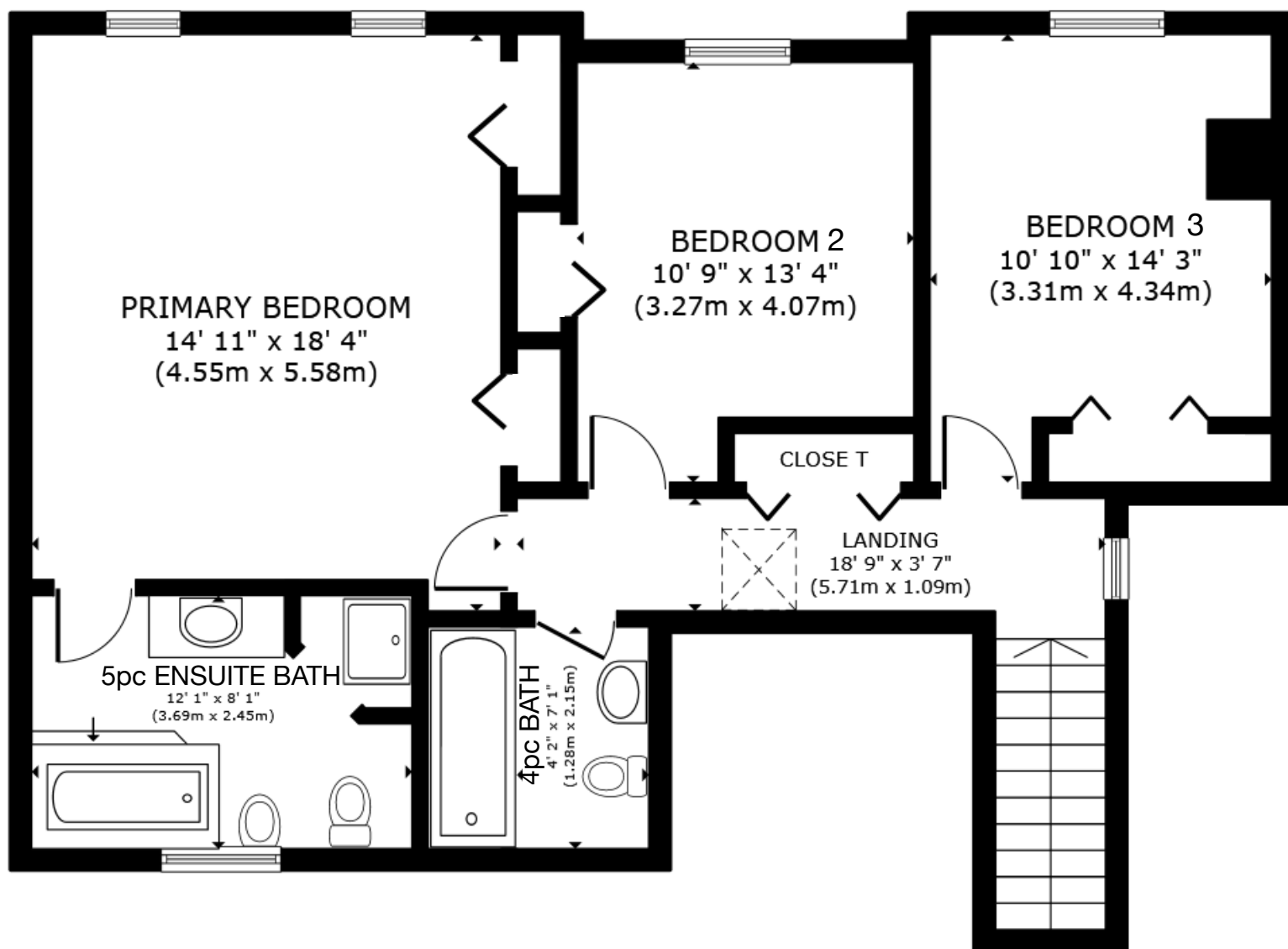
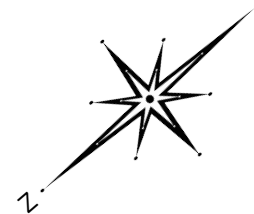
All room dimensions and floor areas must be considered approximate and are subject to independent verification.



3 McKay Court Dundas, ON

Total Above Grade Interior ft²
Approx Above Ground Interior Area = 1617 ft²

Total Interior ft²
Approx Interior Area (basement included) = 2648 ft²



Upper Level

(above grade)

Approx Interior Area = 874 ft²

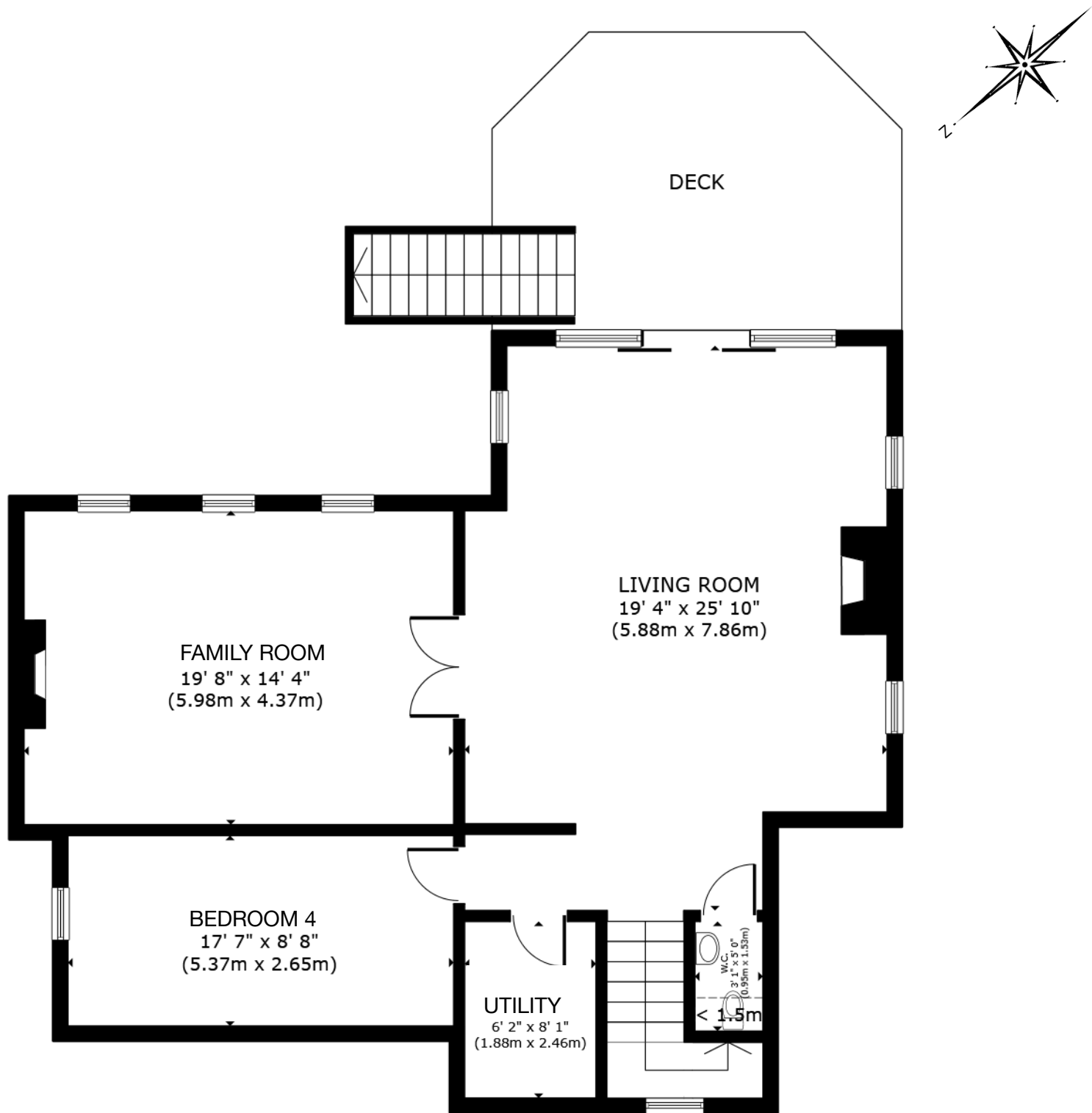
All room dimensions and floor areas must be considered approximate and are subject to independent verification.



3 McKay Court Dundas, ON

Total Above Grade Interior ft²
Approx Above Ground Interior Area = 1617 ft²

Total Interior ft²
Approx Interior Area (basement included) = 2648 ft²



Lower Level

(Below grade)

Approx Interior Area = 1031 ft²

All room dimensions and floor areas must be considered approximate and are subject to independent verification.



Summary

Main Room Interior Measurements

Imperial

Metric

Ground Floor (above grade) - Approx Interior ft² = 743 ft²

Kitchen	15'5 x 17'10	4.70m x 5.43m
Dining Room	7'11 x 14'6	2.41m x 4.42m
Laundry/Mudroom	11'2 x 7'1	3.41m x 2.15m
2pc Bath	4'8 x 7'1	1.43m x 2.15m
Garage (excluded)	17'1 x 20'7	5.20m x 6.28m

Second Floor (above grade) - Approx Interior ft² = 874 ft²

Primary Bedroom	14'11 x 18'4	4.55m x 5.58m
5pc Ensuite Bath	12'1 x 8'1	3.69m x 2.45m
Bedroom 2	10'9 x 13'4	3.27m x 4.07m
Bedroom 3	10'10 x 14'3	3.31m x 4.34m
4pc Bath	4'2 x 7'1	1.28m x 2.15m

Lower Level (below grade) - Approx Interior ft² = 1031 ft²

Living Room	19'4 x 25'10	5.88m x 7.86m
Family Room	19'8 x 14'4	5.98m x 4.37m
Bedroom 4	17'7 x 8'8	5.37m x 2.65m
Utility	6'2 x 8'1	1.88m x 2.46m
2pc Bath	3'1 x 5'0	0.95m x 1.53m

Rooms have irregular shapes and, as such, cannot be truly represented by one length and width. The length and width listed above are the longest length and width of the room. Because of this, room area is not always equal to the product of length and width but has been calculated in any floor area accurately using all wall measurements.

All room dimensions and floor areas must be considered approximate and are subject to independent verification.

