

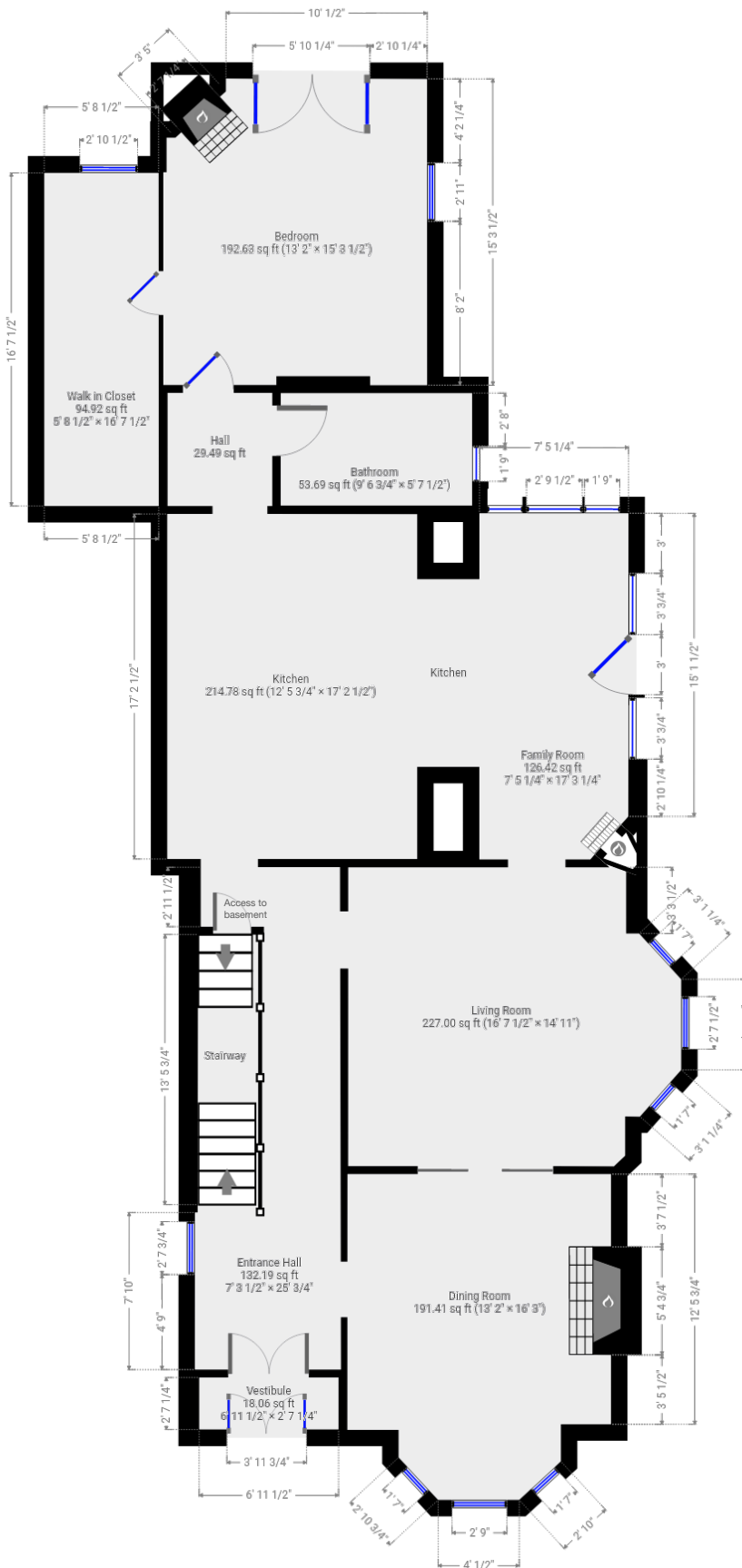
85 Ray St South Hamilton, ON

Total Above Grade Exterior ft²

Approx Above Ground Exterior Area = 3319.88 ft²

Total Exterior ft²

Approx Exterior Area (basement included) = 4226.40 ft²



Ground Floor (above grade)

Approx Interior Area = 1397.11 ft²
Approx Exterior Area = 1587.58 ft²



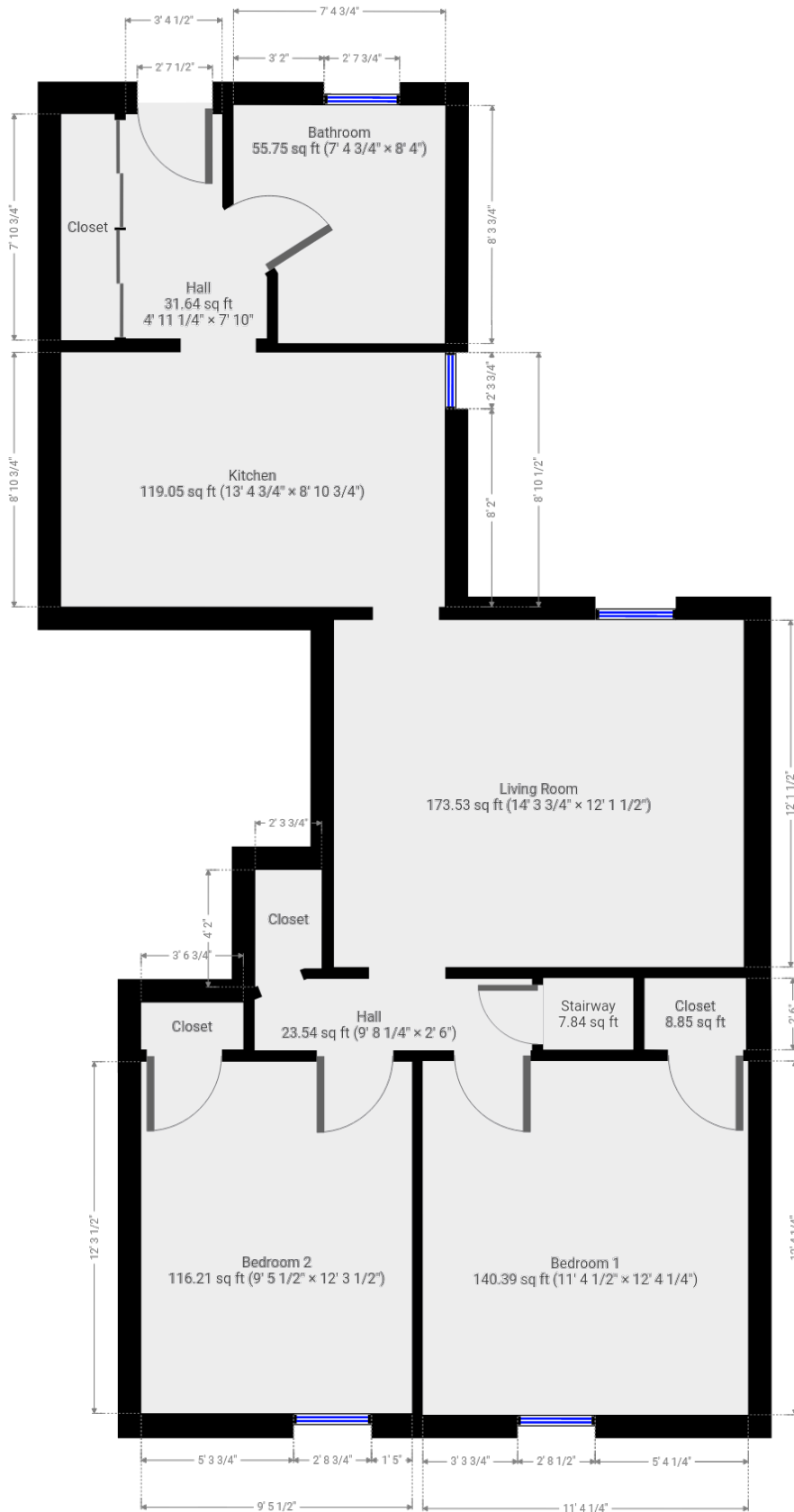
85 Ray St South Hamilton, ON

Total Above Grade Exterior ft²

Approx Above Ground Exterior Area = 3319.88 ft²

Total Exterior ft²

Approx Exterior Area (basement included) = 4226.40 ft²



Second Floor (above grade)

Approx Interior Area = 743.06 ft²
Approx Exterior Area = 871.20 ft²



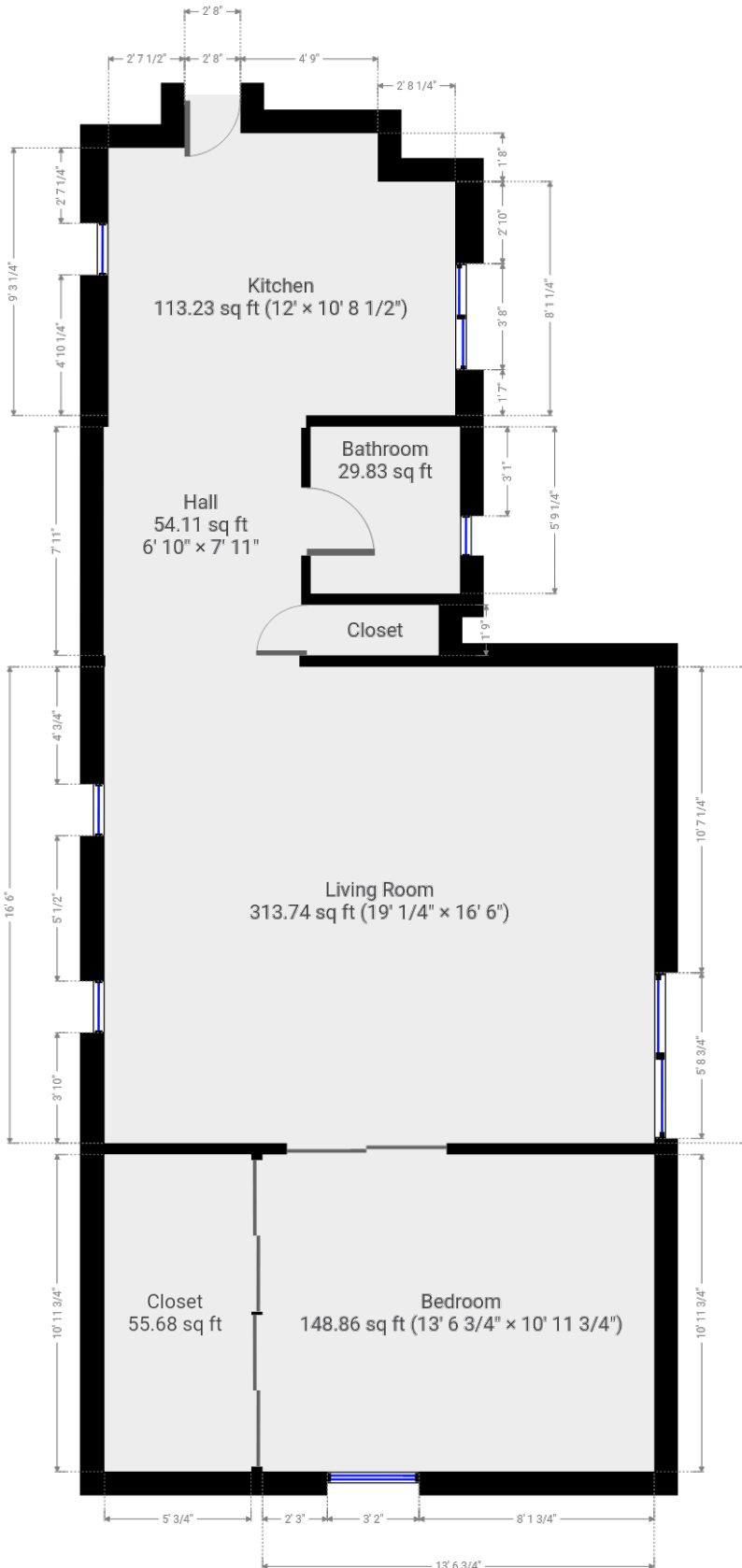
85 Ray St South Hamilton, ON

Total Above Grade Exterior ft²

Approx Above Ground Exterior Area = 3319.88 ft²

Total Exterior ft²

Approx Exterior Area (basement included) = 4226.40 ft²



Third Floor (above grade)



Approx Interior Area = 748.42 ft²
Approx Exterior Area = 861.10 ft²



85 Ray St South

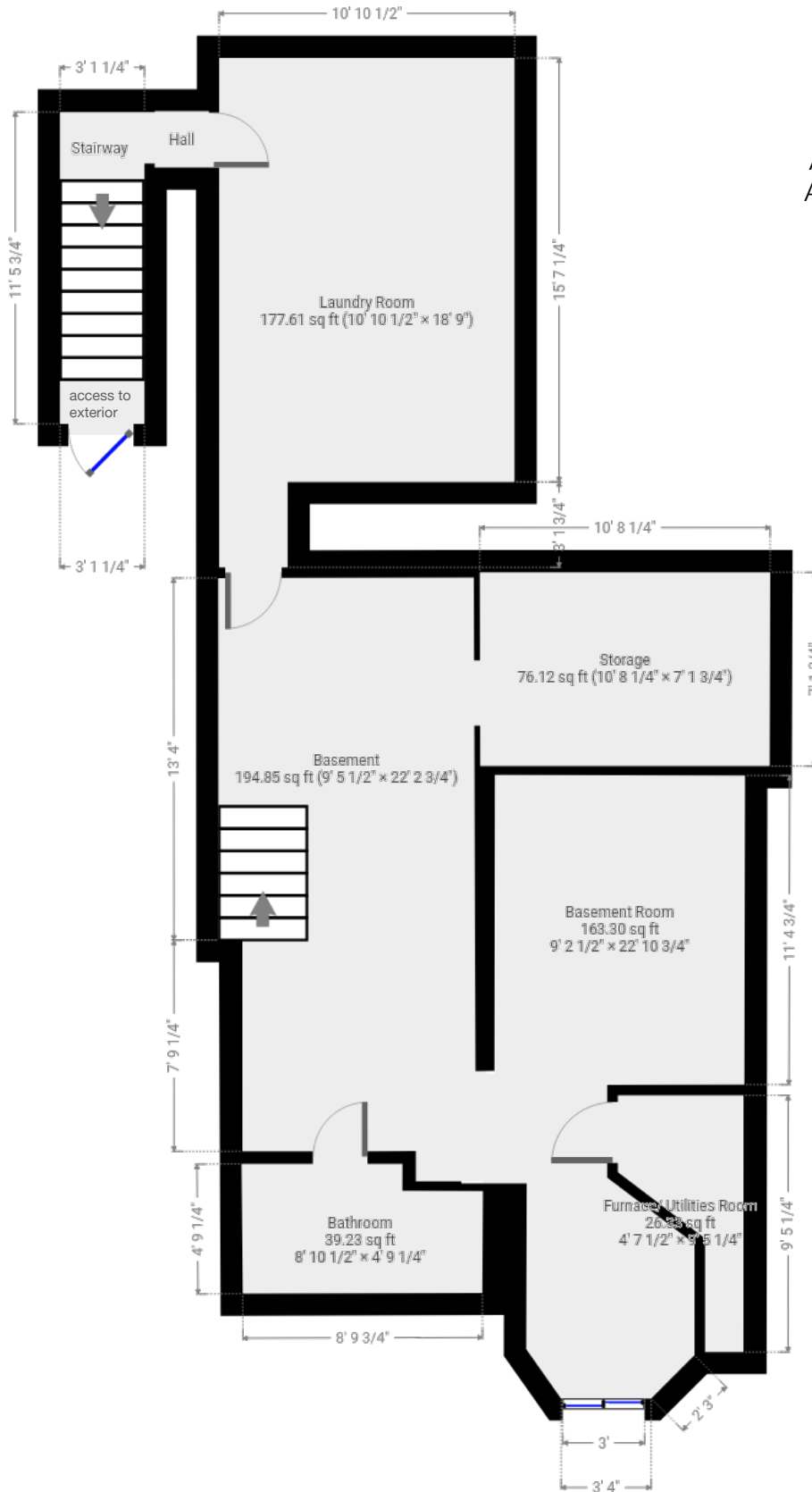
Hamilton, ON

Total Above Grade Exterior ft²

Approx Above Ground Exterior Area = 3319.88 ft²

Total Exterior ft²

Approx Exterior Area (basement included) = 4226.40 ft²



Basement (bellow grade)



Approx Interior Area = 745.60 ft²
 Approx Exterior Area = 906.52 ft²



Main Room Interior Measurements

	Imperial	Metric	Interior ft ²
Ground Floor (above grade)			
Approx Exterior ft²			
1587.58 ft²			
Entrance Hall	7'3 x 25'1	2.21m x 7.65m	132.19 ft ²
Dining Room	13'2 x 16'3	4.01m x 4.95m	191.41 ft ²
Living Room	16'7 x 14'11	5.05m x 4.55m	227.00 ft ²
Family Room	7'5 x 17'3	2.26m x 5.26m	126.42 ft ²
Kitchen	12'6 x 17'2	3.81m x 5.23m	214.78 ft ²
Bathroom	9'7 x 5'7	2.92m x 1.70m	53.69 ft ²
Bedroom	13'2 x 15'3	4.01m x 4.65m	192.63 ft ²
Walk in Closet	5'8 x 16'7	1.73m x 5.05m	94.92 ft ²

Second Floor (above grade)

Approx Exterior ft²
871.20 ft²

Hall	4'11 x 7'10	1.50m x 2.39m	31.64 ft ²
Bathroom	7'5 x 8'4	2.26m x 2.54m	55.75 ft ²
Kitchen	13'5 x 8'11	4.09m x 2.72m	119.05 ft ²
Living Room	14'4 x 12'1	4.37m x 3.68m	173.53 ft ²
Bedroom 1	11'4 x 12'4	3.45m x 3.76m	140.39 ft ²
Bedroom 2	9'5 x 12'3	2.87m x 3.73m	116.21 ft ²

Third Floor (above grade)

Approx Exterior ft²
861.10 ft²

Kitchen	12' x 10'8	3.66m x 3.25m	113.23 ft ²
Hall	6'10 x 7'11	2.08m x 2.41m	54.11 ft ²
Bathroom	5'9 x 5'2	1.75m x 1.57m	29.83 ft ²
Living Room	19' x 16'6	5.79m x 5.03m	313.74 ft ²
Bedroom	13'7 x 11'	4.14m x 3.35m	148.86 ft ²

Totals

Total Above Grade Exterior ft²

Approx Above Ground Exterior Area = 3319.88 ft²

Total Exterior ft²

Approx Exterior Area (basement included) = 4226.40 ft²

Rooms have irregular shapes and, as such, cannot be truly represented by one length and width. The length and width listed above are the longest length and width of the room. Because of this, room area is not always equal to the product of length and width but has been calculated in any floor area accurately using all wall measurements.



Main Room Interior Measurements

	Imperial	Metric	Interior ft
Basement (below grade)			
Approx Exterior ft²			
906.52 ft²			
Basement	9'5 x 22'3	2.87m x 6.78m	194.85 ft ²
Laundry Room	10'10 x 18'9	3.30m x 5.72m	177.61 ft ²
Basement Room	9'2 x 22'11	2.79m x 6.99m	163.30 ft ²
Storage	10'8 x 7'2	3.25m x 2.18m	76.12 ft ²
Bathroom	8'10 x 4'9	2.69m x 1.45m	39.23 ft ²

Totals
Total Above Grade Exterior ft²
Approx Above Ground Exterior Area = 3319.88 ft ²
Total Exterior ft²
Approx Exterior Area (basement included) = 4226.40 ft ²

Rooms have irregular shapes and, as such, cannot be truly represented by one length and width. The length and width listed above are the longest length and width of the room. Because of this, room area is not always equal to the product of length and width but has been calculated in any floor area accurately using all wall measurements.

