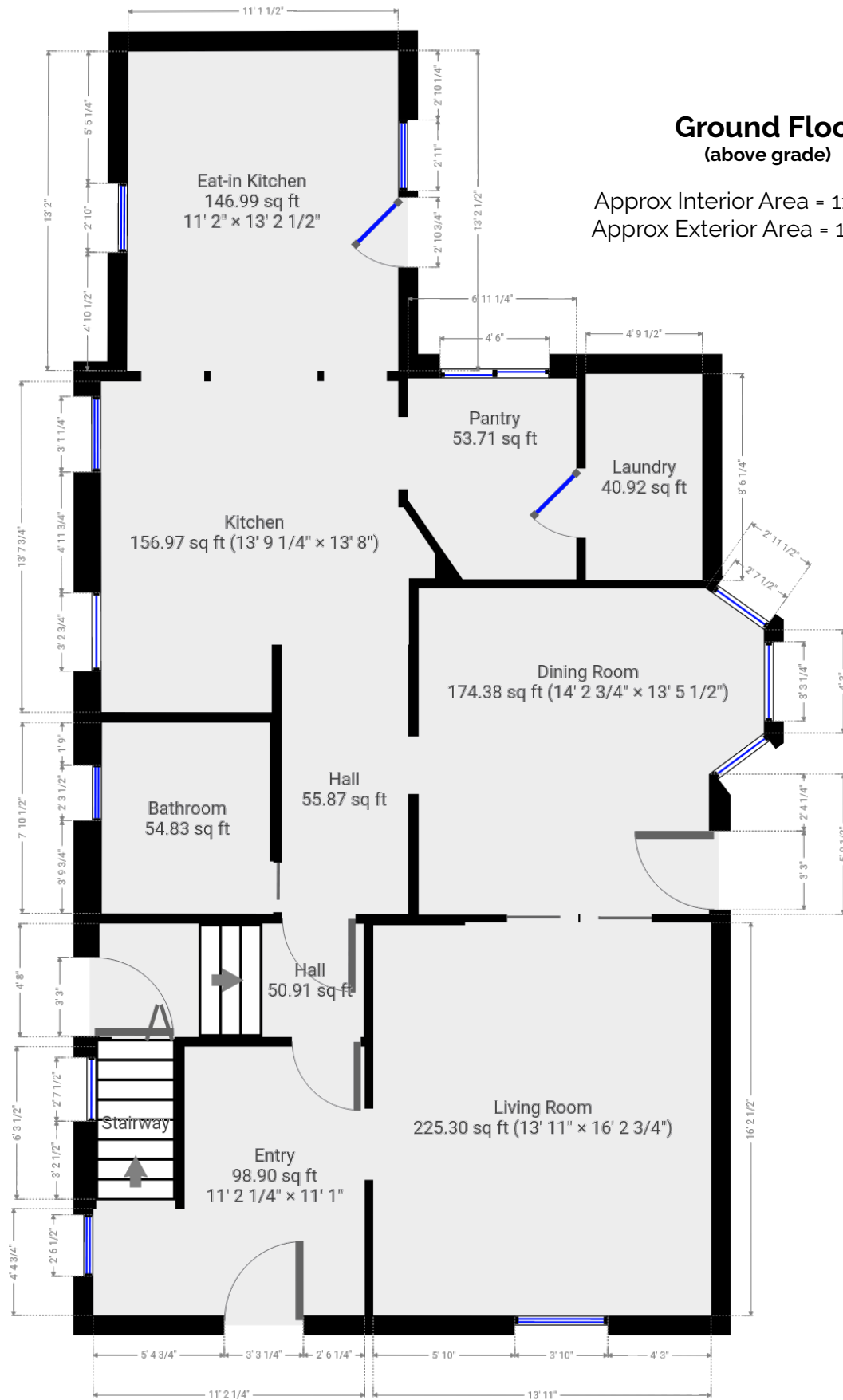


802 Old Hwy 8 Rockton, ON

Total Above Grade Exterior ft²
 Approx Above Ground Exterior Area = 2382.71 ft²



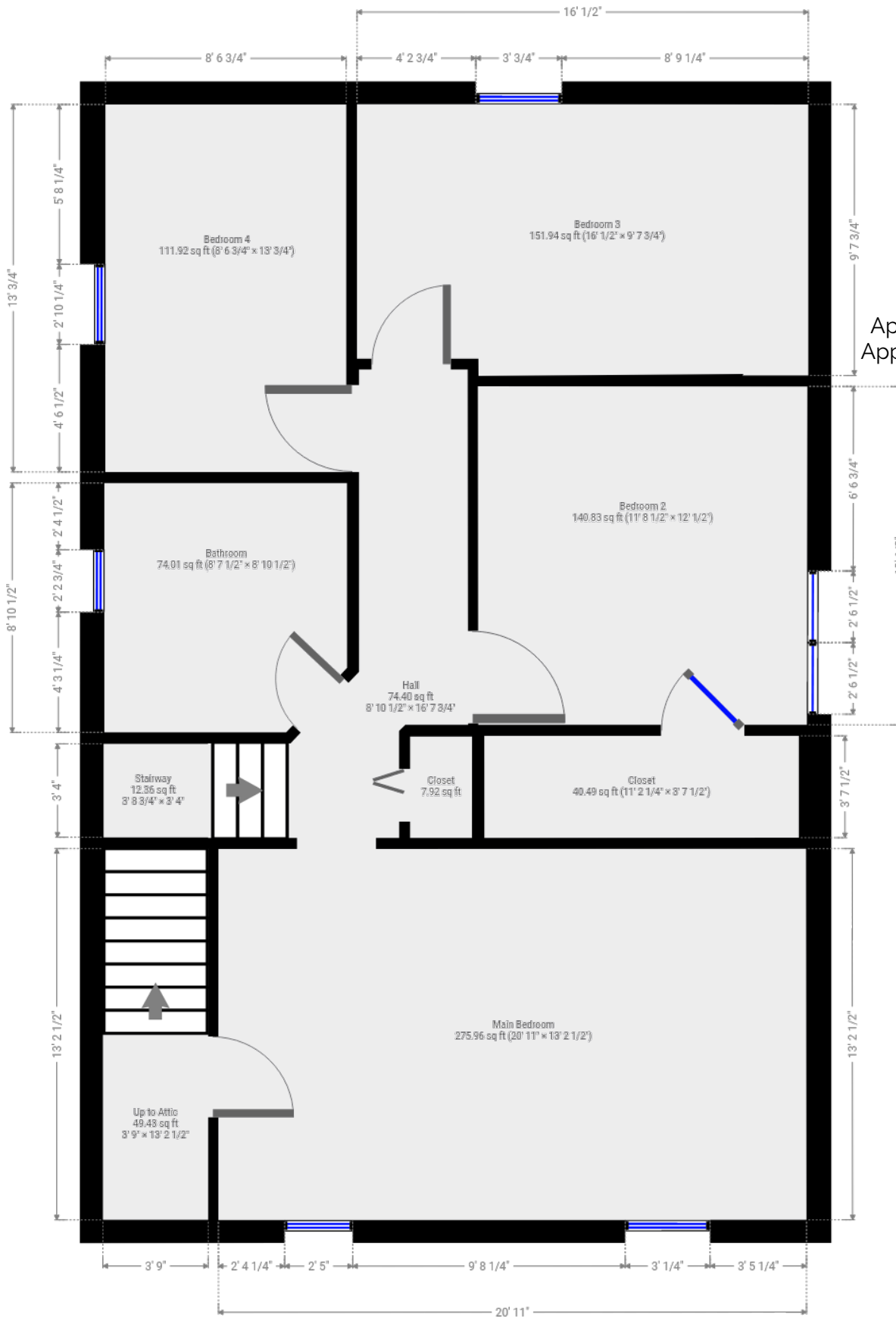
All room dimensions and floor areas must be considered approximate and are subject to independent verification.

Lidar iScan by VOGELcreative.com



802 Old Hwy 8 Rockton, ON

Total Above Grade Exterior ft²
 Approx Above Ground Exterior Area = 2382.71 ft²



Second Floor (above grade)

Approx Interior Area = 990.15 ft²
 Approx Exterior Area = 1099.49 ft²



Main Room Interior Measurements

	Imperial	Metric	Interior ft ²
Ground Floor (above grade)			
Approx Exterior ft²			
1283.22 ft²			
Entry	11'2 x 11'1	3.40m x 3.35m	98.90 ft ²
Living Room	13'11 x 16'3	4.24m x 4.95m	225.30 ft ²
Dining Room	14'3 x 13'6	4.34m x 4.11m	174.38 ft ²
Bathroom	7'1 x 7'11	2.16m x 2.41m	54.83 ft ²
Kitchen	13'9 x 13'8	4.19m x 4.17m	156.97 ft ²
Eat-in Kitchen	11'2 x 13'3	3.40m x 4.04m	146.99 ft ²
Pantry	6'11 x 8'3	2.11m x 2.51m	53.71 ft ²
Laundry	4'10 x 8'6	1.47m x 2.59m	40.92 ft ²

Second Floor (above grade)

Approx Exterior ft²			
1099.49 ft²			
Main Bedroom	20'11 x 13'3	6.38m x 4.04m	275.96 ft ²
Bedroom 2	11'9 x 12'1	3.58m x 3.68m	140.83 ft ²
Walk-in Closet	11'2 x 3'8	3.40m x 1.12m	40.49 ft ²
Bedroom 3	16'1 x 9'8	4.90m x 2.95m	151.94 ft ²
Bedroom 4	8'7 x 13'1	2.62m x 3.99m	111.92 ft ²
Bathroom	8'8 x 8'11	2.64m x 2.72m	74.01 ft ²

Totals

Total Above Grade Exterior ft²

Approx Above Ground Exterior Area = 2382.71 ft²

Rooms have irregular shapes and, as such, cannot be truly represented by one length and width. The length and width listed above are the longest length and width of the room. Because of this, room area is not always equal to the product of length and width but has been calculated in any floor area accurately using all wall measurements.

