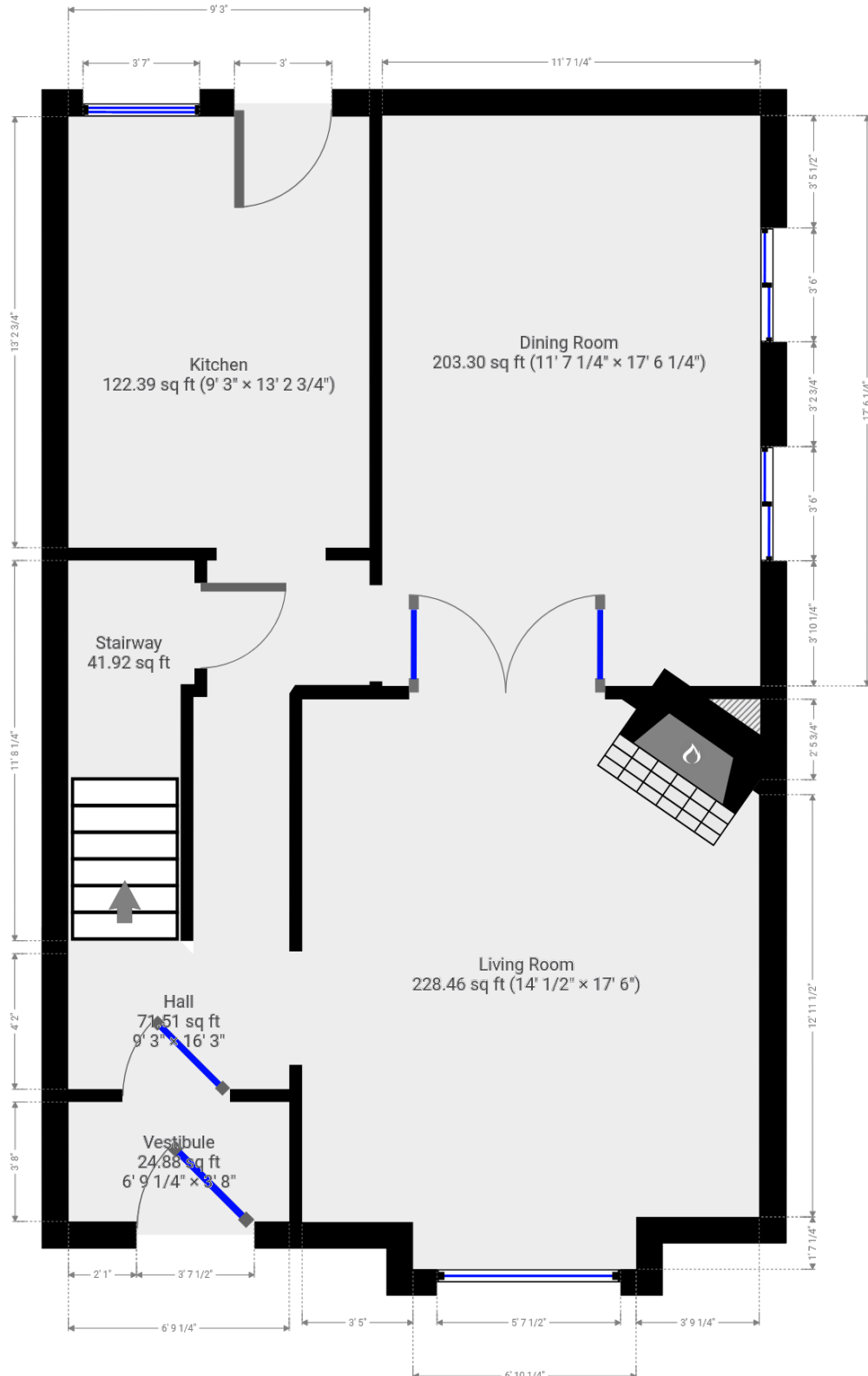


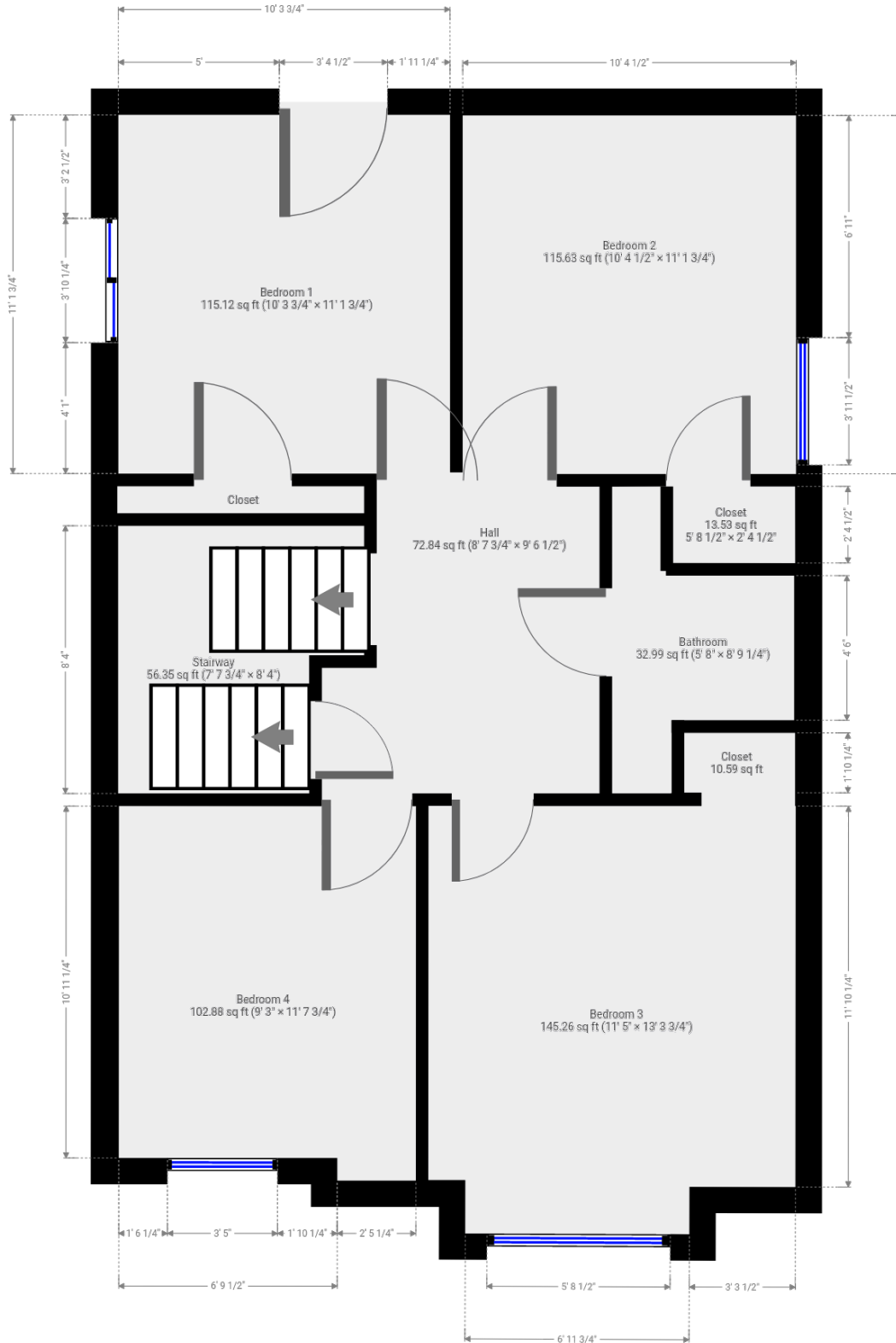
**Ground Floor**  
(above grade)

Approx Interior Area = 730.13 ft<sup>2</sup>  
Approx Exterior Area = 825.78 ft<sup>2</sup>



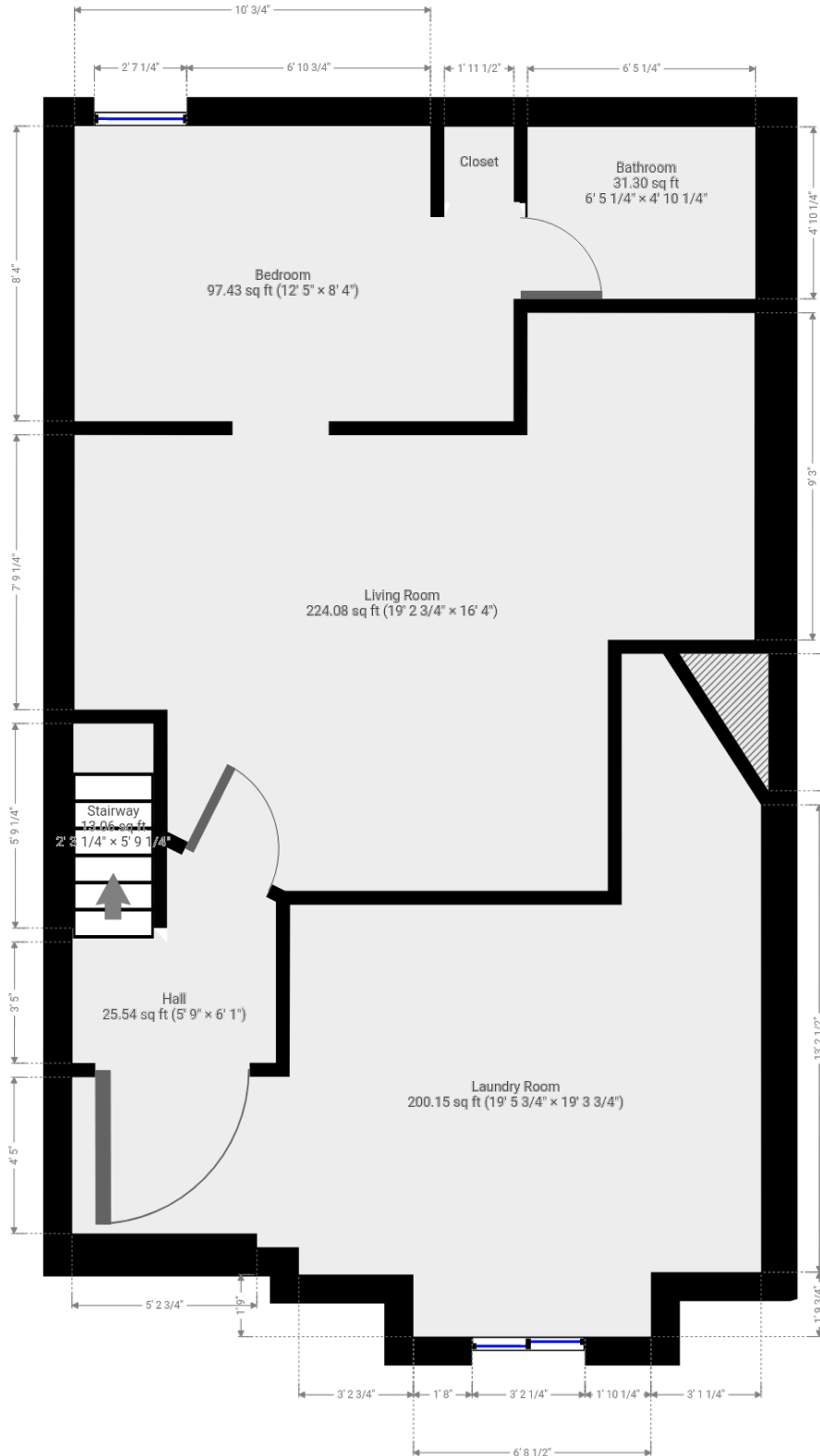
**Second Floor**  
(above grade)

Approx Interior Area = 704.98 ft<sup>2</sup>  
 Approx Exterior Area = 799.48 ft<sup>2</sup>



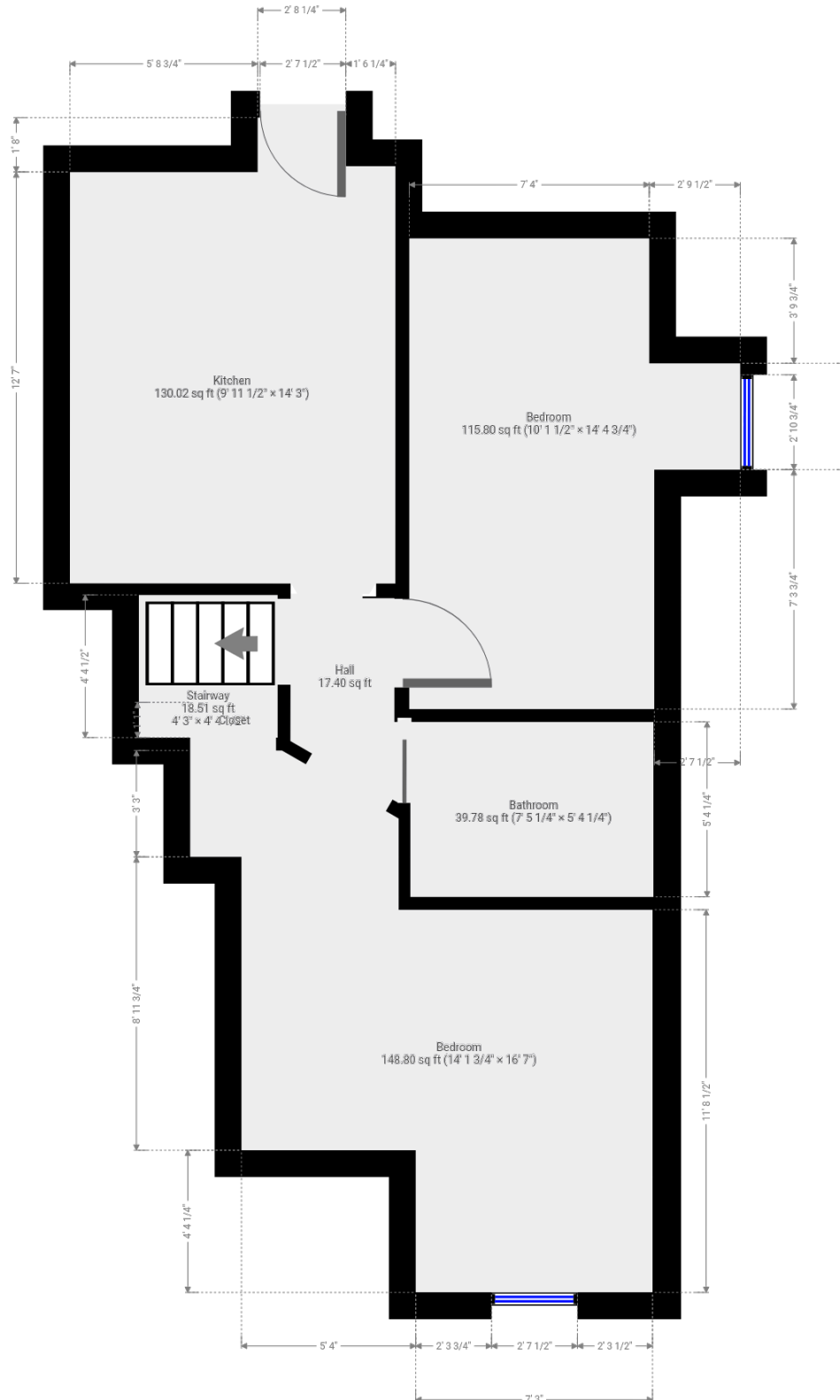
**Basement**  
(below grade)

Approx Interior Area = 632.84 ft<sup>2</sup>  
Approx Exterior Area = 723.91 ft<sup>2</sup>



**Third Floor**  
(above grade)

Approx Interior Area = 491.65 ft<sup>2</sup>  
Approx Exterior Area = 586.89 ft<sup>2</sup>



**Main Room Interior Measurements**

	Imperial	Metric	Interior ft <sup>2</sup>
<b>Ground Floor (above grade)</b>			
<b>Approx Exterior ft<sup>2</sup></b>			
<b>825.78 ft<sup>2</sup></b>			
Living Room	14'1 x 17'6	4.29m x 5.33m	228.46 ft <sup>2</sup>
Dining Room	11'7 x 17'6	3.53m x 5.33m	203.30 ft <sup>2</sup>
Kitchen	9'3 x 13'3	2.82m x 4.04m	122.39 ft <sup>2</sup>
<b>Second Floor (above grade)</b>			
<b>Approx Exterior ft<sup>2</sup></b>			
<b>799.48 ft<sup>2</sup></b>			
Bedroom 1	10'4 x 11'2	3.15m x 3.40m	115.12 ft <sup>2</sup>
Bedroom 2	10'5 x 11'2	3.18m x 3.40m	115.63 ft <sup>2</sup>
Bedroom 3	5'8 x 8'9	1.73m x 2.67m	32.99 ft <sup>2</sup>
Bedroom 4	9'3 x 11'8	2.82m x 2.56m	102.88 ft <sup>2</sup>
Bathroom	5'8 x 8'9	1.73m x 2.67m	32.99 ft <sup>2</sup>
<b>Third Floor (above grade)</b>			
<b>Approx Exterior ft<sup>2</sup></b>			
<b>586.89 ft<sup>2</sup></b>			
Kitchen	10' x 14'3	3.05m x 4.34m	130.02 ft <sup>2</sup>
Bedroom	10'2 x 14'5	3.10m x 4.39m	115.80 ft <sup>2</sup>
Bathroom	7'5 x 5'4	2.26m x 1.63m	39.78 ft <sup>2</sup>
Bedroom	14'2 x 16'7	4.32m x 5.05m	148.80 ft <sup>2</sup>
<b>Basement (below grade)</b>			
<b>Approx Exterior ft<sup>2</sup></b>			
<b>723.91 ft<sup>2</sup></b>			
Living/Kitchen	19'3 x 16'4	5.87m x 4.98m	224.08 ft <sup>2</sup>
Bedroom	12'5 x 8'4	3.78m x 2.54m	97.43 ft <sup>2</sup>
Bathroom	6'5 x 4'10	1.96m x 1.47m	31.30 ft <sup>2</sup>
Common use areas			
Laundry/Utility	19'6 x 19'4	5.94m x 5.89m	200.15 ft <sup>2</sup>

**Totals**

**Total Above Grade Exterior ft<sup>2</sup>**  
 Approx Above Ground Exterior Area = 2212.15 ft<sup>2</sup>  
**Total Exterior ft<sup>2</sup>**  
 Approx Exterior Area (basement included) = 2936.06 ft<sup>2</sup>

Rooms have irregular shapes and, as such, cannot be truly represented by one length and width. The length and width listed above are the longest length and width of the room. Because of this, room area is not always equal to the product of length and width but has been calculated in any floor area accurately using all wall measurements.

