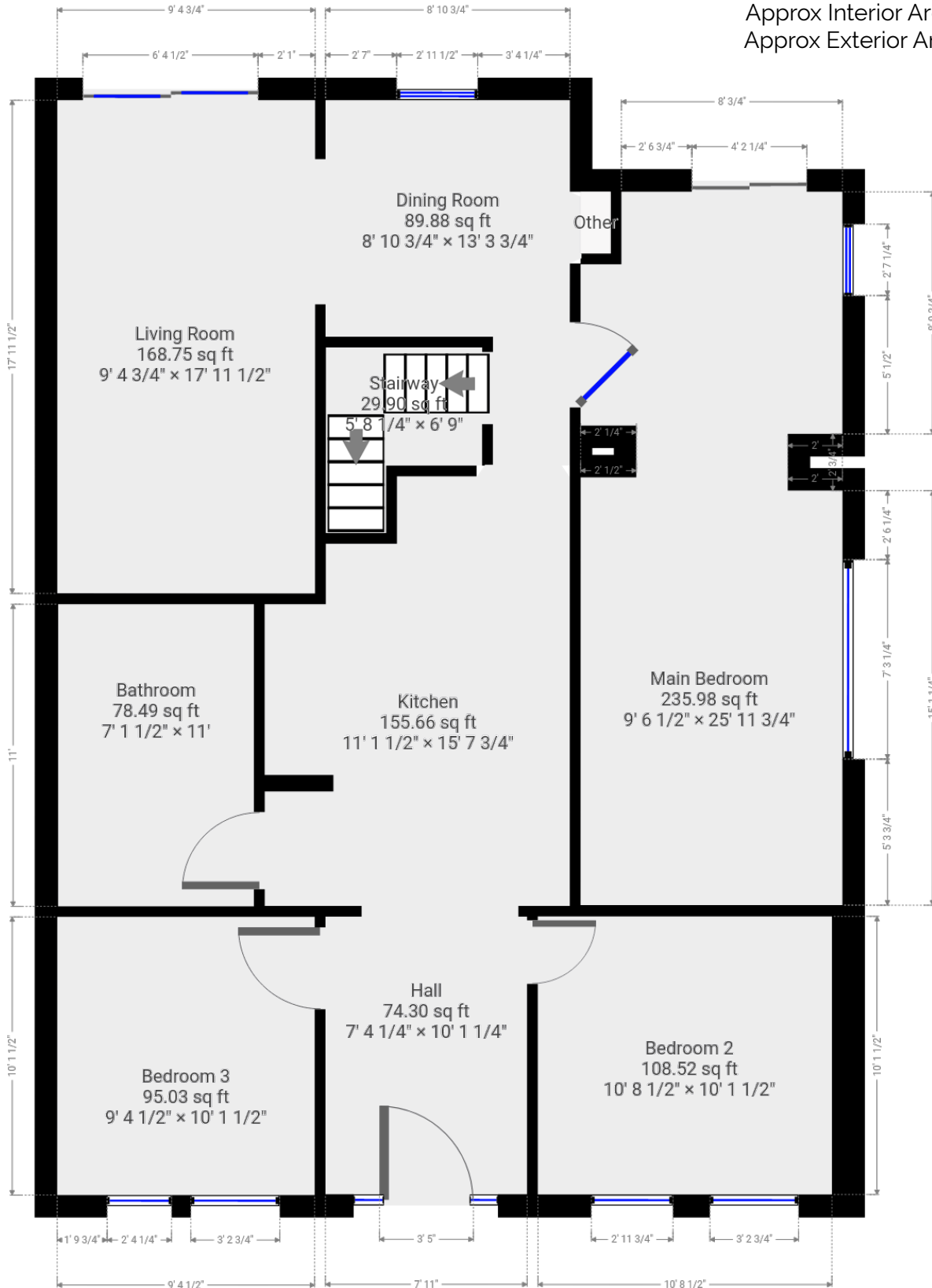


Ground Floor
(above grade)



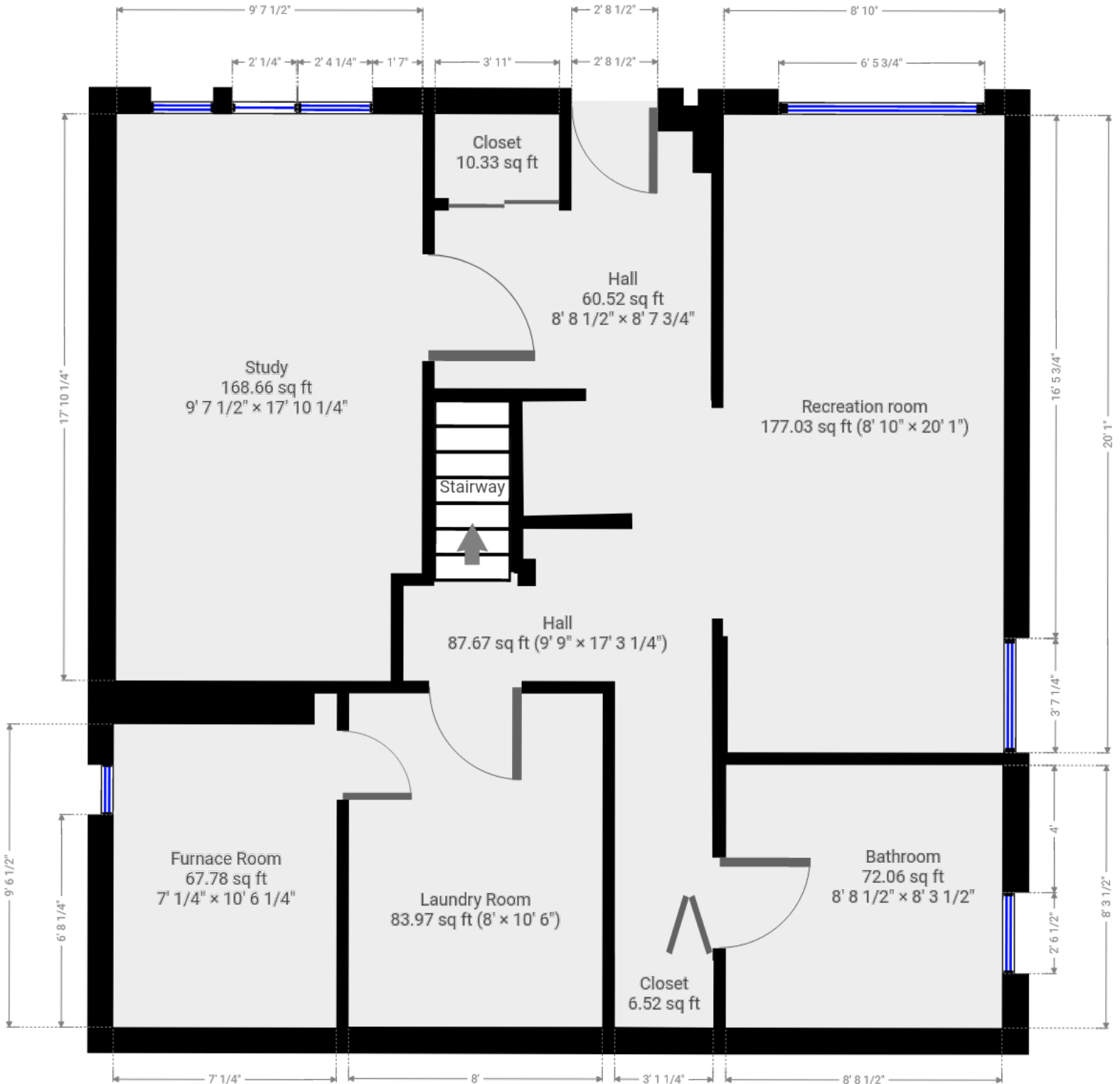
Approx Interior Area = 1094.01 ft²
Approx Exterior Area = 1216.75 ft²



Basement
(below grade)



Approx Interior Area = 792.86 ft²
Approx Exterior Area = 900.27 ft²



Main Room Interior Measurements

	Imperial	Metric	Interior ft ²
Ground Floor (above grade)			
Approx Exterior ft²			
1216.75 ft²			
Living Room	9'5" x 18'	2.87m x 5.49m	168.75 ft ²
Dining Room	8'11" x 13'4"	2.72m x 4.06m	89.88 ft ²
Kitchen	11'2" x 15'8"	3.40m x 4.80m	155.66 ft ²
Main Bedroom	9'7" x 26'	2.92m x 7.92m	235.98 ft ²
Bedroom 2	10'9" x 10'2"	3.28m x 3.10m	108.52 ft ²
Bedroom 3	9'5" x 10'2"	2.87m x 3.10m	95.03 ft ²
Bathroom	7'2" x 11'	2.18m x 3.35m	78.49 ft ²

Basement (below grade)

Approx Exterior ft²
900.27 ft²

Rec Room	8'10" x 20'1"	2.69m x 6.12m	177.03 ft ²
Study	7'8" x 17'10"	2.34m x 5.44m	168.66 ft ²
Bathroom	8'9" x 8'4"	2.67m x 2.54m	72.06 ft ²
Laundry	8' x 10'6"	2.44m x 3.20m	83.97 ft ²
Furnace Room	7' x 10'6"	2.13m x 3.20m	67.78 ft ²

Totals

Total Above Grade Exterior ft²

Approx Above Ground Exterior Area = 1216.75 ft²

Total Exterior ft²

Approx Exterior Area (basement included) = 2117.01 ft²

Rooms have irregular shapes and, as such, cannot be truly represented by one length and width. The length and width listed above are the longest length and width of the room. Because of this, room area is not always equal to the product of length and width but has been calculated in any floor area accurately using all wall measurements.

