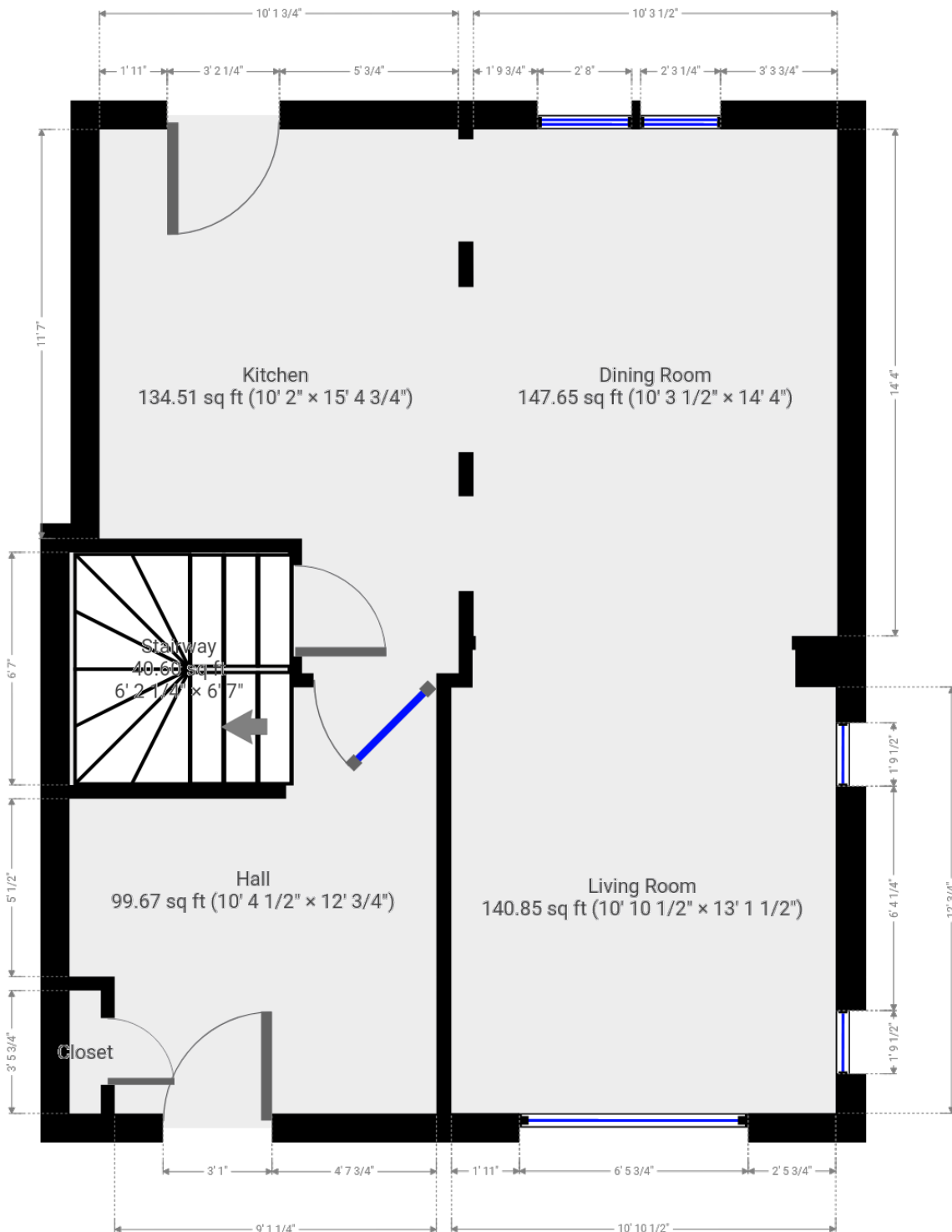


29 Leinster Ave S  
Hamilton, Ontario

**Total Above Grade Exterior ft<sup>2</sup>**  
 Approx Above Ground Exterior Area = 1663.59ft<sup>2</sup>  
**Total Exterior ft<sup>2</sup> (includes basement)**  
 Approx Total Exterior Area = 2346.58 ft<sup>2</sup>

**Main Level**  
 (above grade) 

Approx Interior Area = 592.58 ft<sup>2</sup>  
 Approx Exterior Area = 678.25 ft<sup>2</sup>



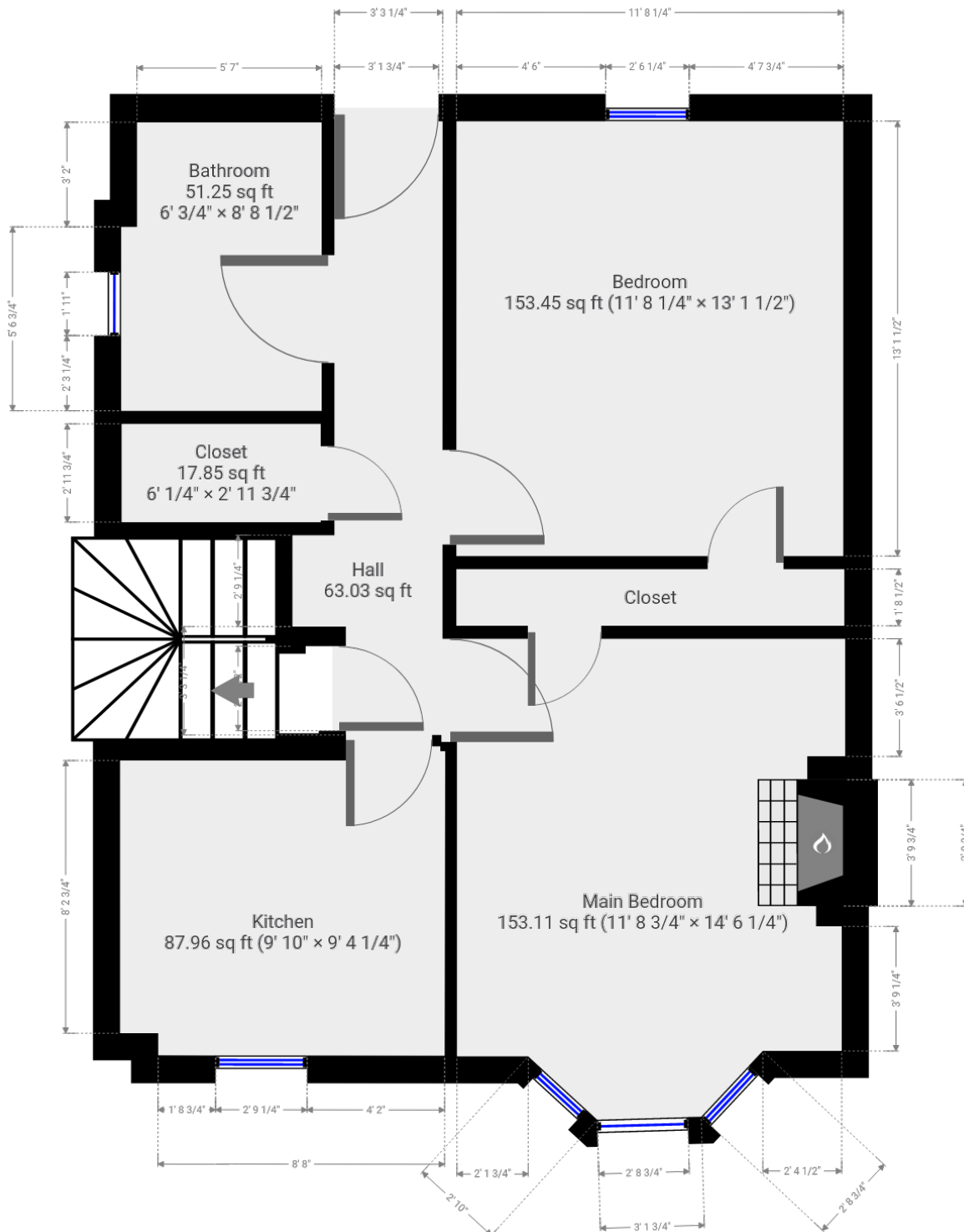
All room dimensions and floor areas must be considered approximate and are subject to independent verification.

Lidar iScan by [VOGELcreative.com](http://VOGELcreative.com)



**Second Level**   
(above grade)

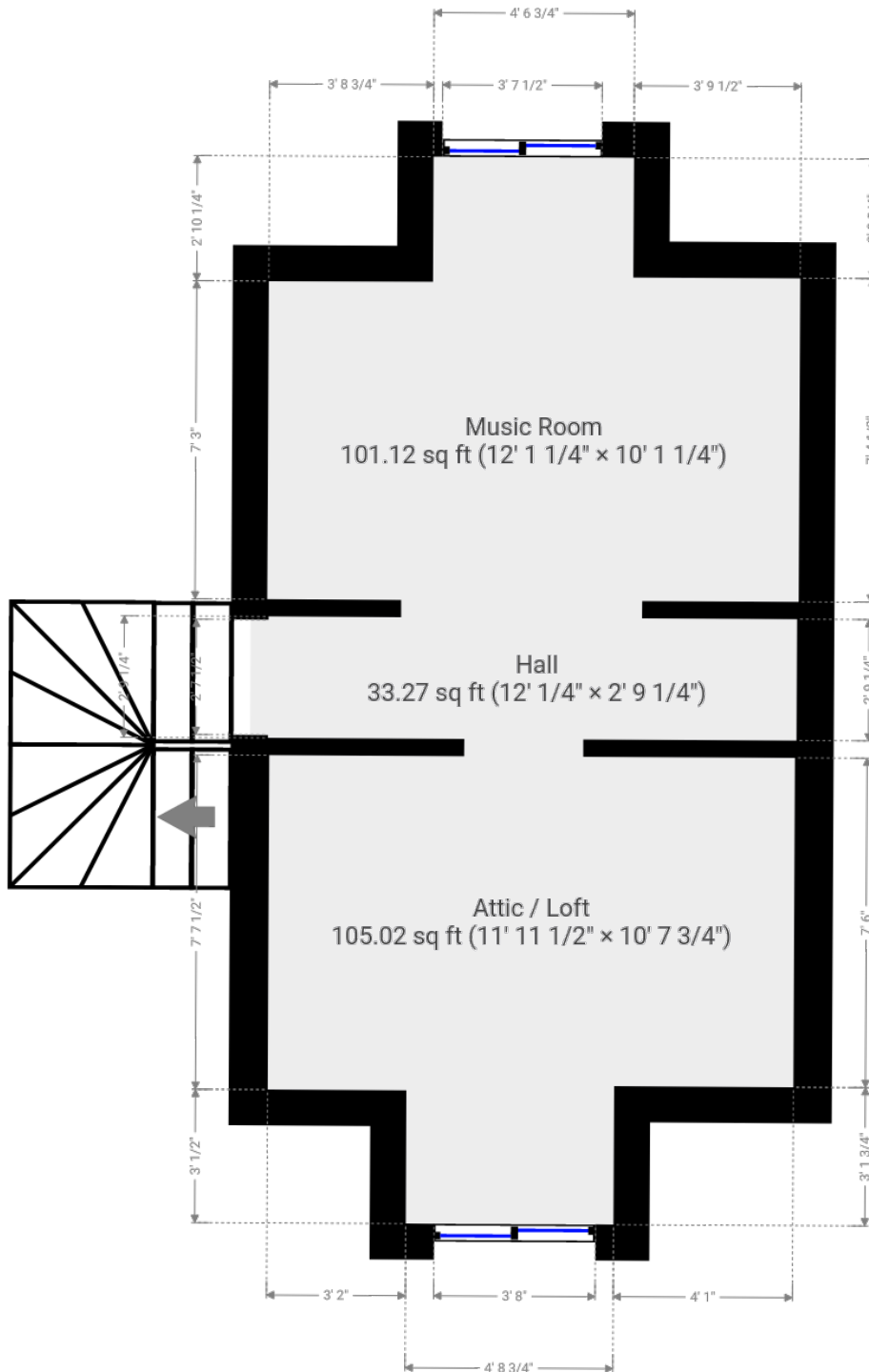
Approx Interior Area = 576.21 ft<sup>2</sup>  
Approx Exterior Area = 674.20 ft<sup>2</sup>



**Third Level**  
(above grade)



Approx Interior Area = 248.75 ft<sup>2</sup>  
Approx Exterior Area = 311.14 ft<sup>2</sup>



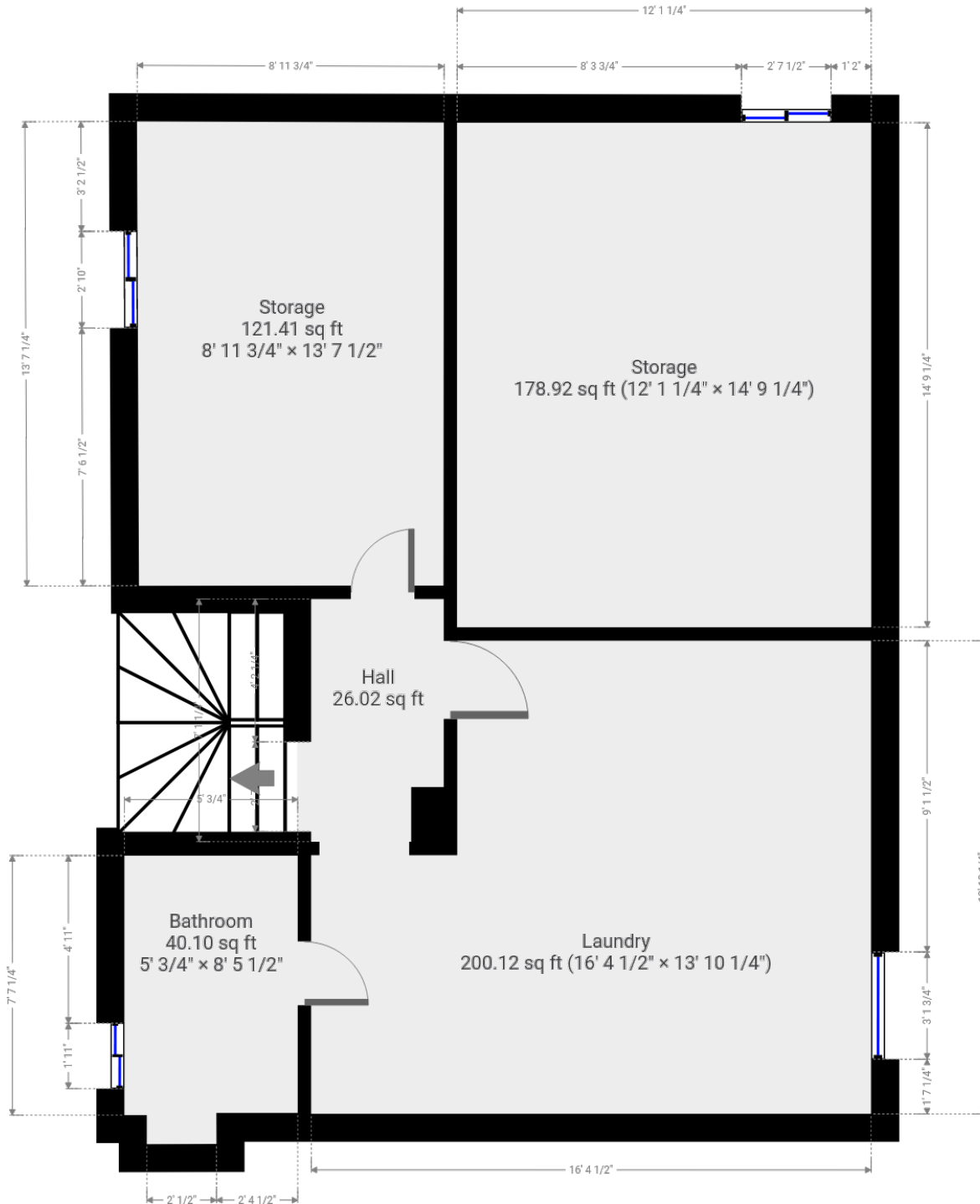
29 Leinster Ave S  
Hamilton, Ontario

**Total Above Grade Exterior ft<sup>2</sup>**  
Approx Above Ground Exterior Area = 1663.59ft<sup>2</sup>  
**Total Exterior ft<sup>2</sup> (includes basement)**  
Approx Total Exterior Area = 2346.58 ft<sup>2</sup>

**Lower Level**  
(below grade)



Approx Interior Area = 584.34 ft<sup>2</sup>  
Approx Exterior Area = 682.99 ft<sup>2</sup>



**Main Room Interior Measurements**

	Imperial	Metric	Interior ft <sup>2</sup>
<b>Main Floor (above grade)</b>			
<b>Approx Exterior ft<sup>2</sup></b>			
<b>678.25 ft<sup>2</sup></b>			
Living Room	10'11 x 13'2	3.33m x 4.01m	140.85 ft <sup>2</sup>
Dining Room	10'4 x 14'4	3.15m x 4.37m	147.65 ft <sup>2</sup>
Kitchen	10'2 x 15'5	3.10m x 4.70m	134.51 ft <sup>2</sup>
Entry Hall	10'5 x 12'1	3.18m x 3.68m	99.67 ft <sup>2</sup>
<b>Second Level (above grade)</b>			
<b>Approx Exterior ft<sup>2</sup></b>			
<b>674.20 ft<sup>2</sup></b>			
Main Bedroom	11'9 x 14'6	3.58m x 4.47m	153.11 ft <sup>2</sup>
Bedroom	11'8 x 13'2	3.56m x 4.01m	153.45 ft <sup>2</sup>
Bathroom	6'1 x 8'9	1.85m x 2.67m	51.25 ft <sup>2</sup>
Kitchen	9'10 x 9'4	3.00m x 2.90m	87.96 ft <sup>2</sup>
<b>Third Level (above grade)</b>			
<b>Approx Exterior ft<sup>2</sup></b>			
<b>311.14 ft<sup>2</sup></b>			
Attic/Loft	12'0 x 10'8	3.68m x 3.25m	105.02 ft <sup>2</sup>
Music Room	12'1 x 10'1	3.68m x 3.07m	101.12 ft <sup>2</sup>
<b>Lower Level (below grade)</b>			
<b>Approx Exterior ft<sup>2</sup></b>			
<b>682.99 ft<sup>2</sup></b>			
Laundry	16'5 x 13'10	5.00m x 4.22m	200.12 ft <sup>2</sup>
Storage	12'1 x 14'9	3.68m x 4.50m	178.92 ft <sup>2</sup>
Storage	9'0 x 13'8	2.74m x 4.17m	121.41 ft <sup>2</sup>
Bathroom	5'1 x 8'6	1.55m x 2.62m	40.14 ft <sup>2</sup>

**Totals**

**Total Above Grade Exterior ft<sup>2</sup>**  
 Approx Above Ground Exterior Area = 1663.59ft<sup>2</sup>  
**Total Exterior ft<sup>2</sup> (includes basement)**  
 Approx Total Exterior Area = 2346.58 ft<sup>2</sup>

Rooms have irregular shapes and, as such, cannot be truly represented by one length and width. The length and width listed above are the longest length and width of the room. Because of this, room area is not always equal to the product of length and width but has been calculated in any floor area accurately using all wall measurements.

