

82 Osler Drive

Dundas, Ontario

Total Above Grade Exterior ft²

Approx Exterior Area = 2764.4 ft²

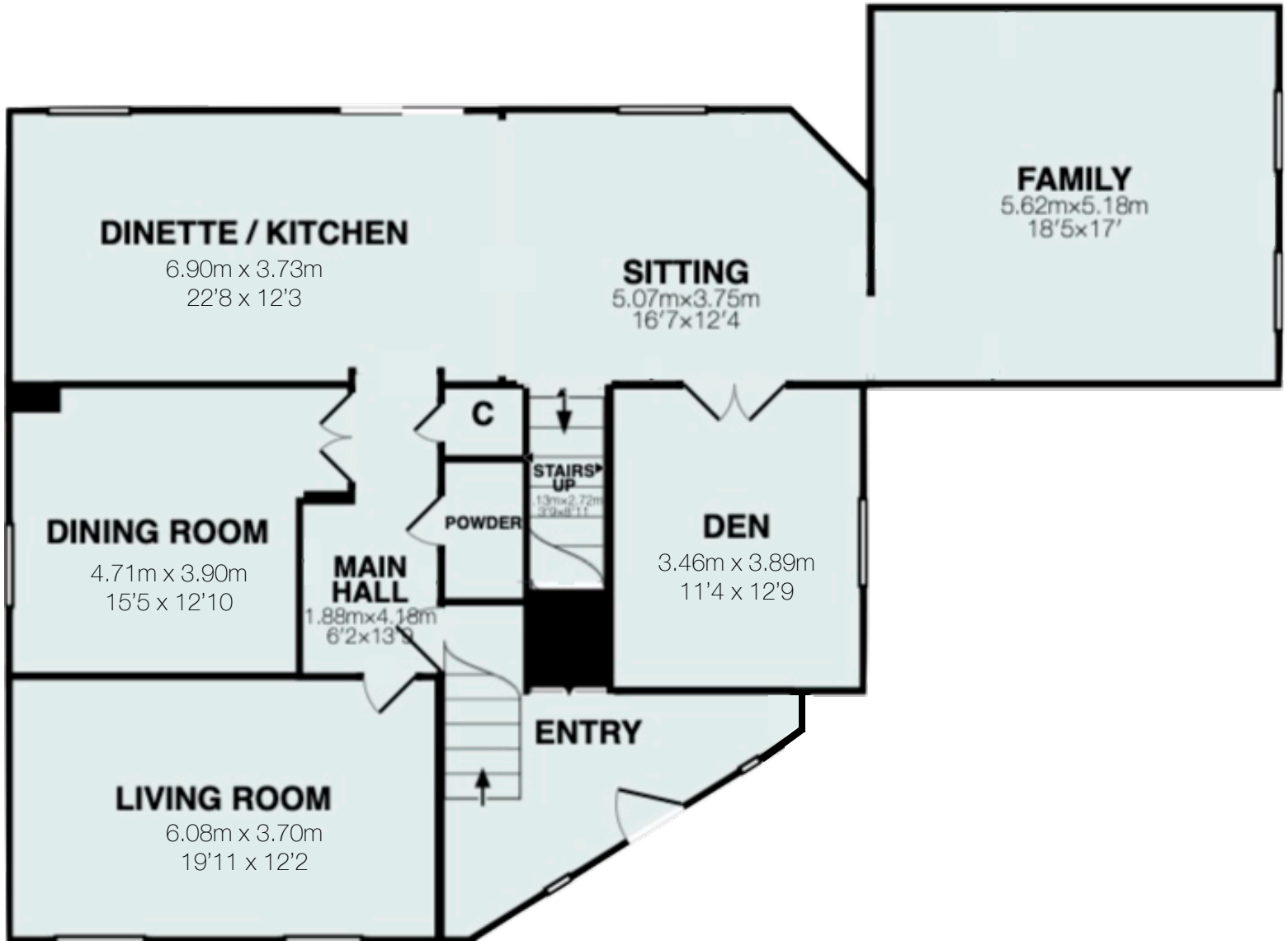
Total Exterior ft²

Approx Exterior Area (includes basement) = 3989.9 ft²

Main Level (above grade)

Approx Interior Floor Area = 1619.7 ft²

Approx Exterior Area = 1739.5 ft²



82 Osler Drive

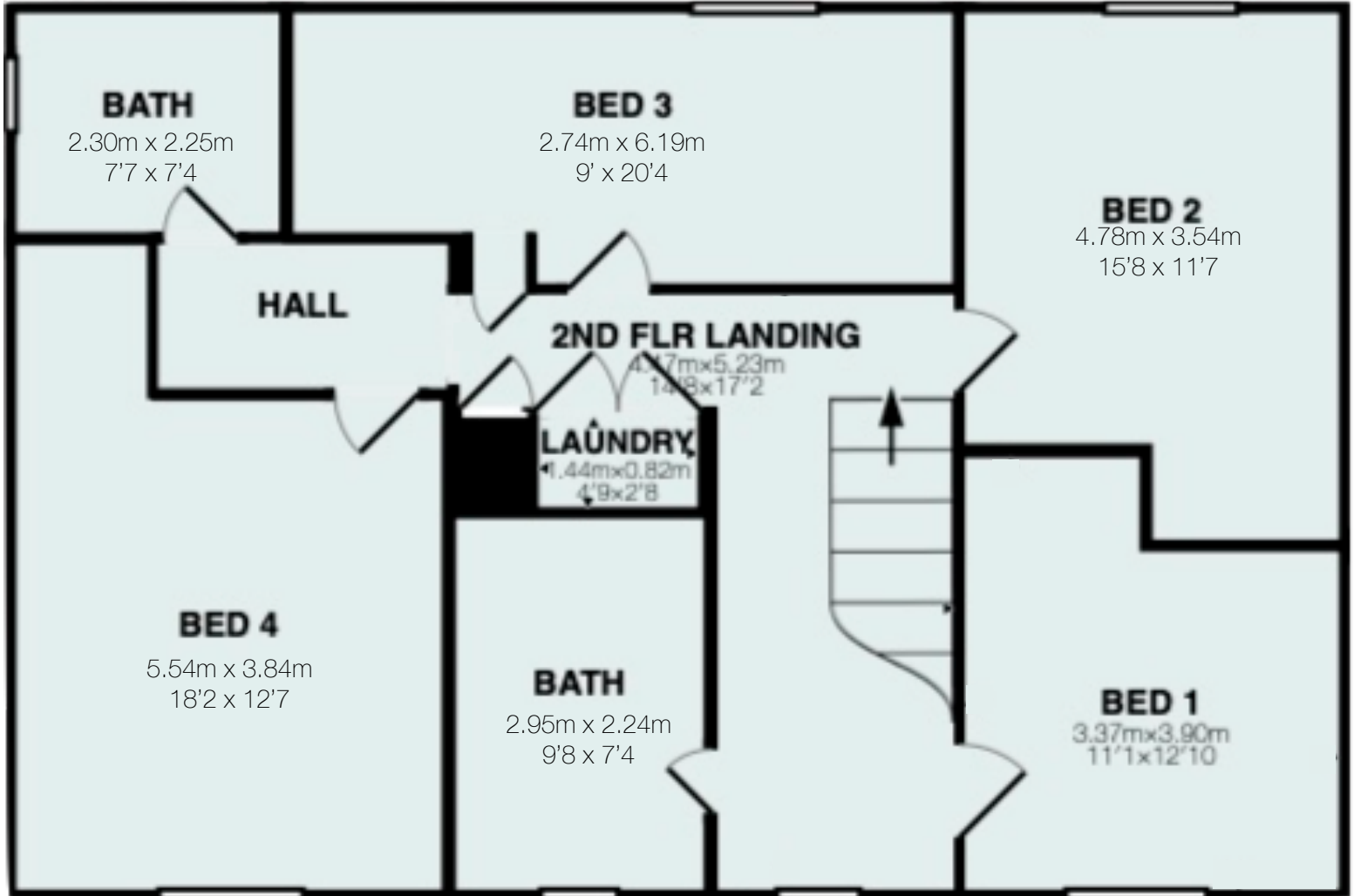
Dundas, Ontario

Total Above Grade Exterior ft²
Approx Exterior Area = 2764.4 ft²

Total Exterior ft²
Approx Exterior Area (includes basement) = 3989.9 ft²

Upper Level (above grade)

Approx Interior Floor Area = 945.8 ft²
Approx Exterior Area = 1024.9 ft²



82 Osler Drive

Dundas, Ontario

Total Above Grade Exterior ft²

Approx Exterior Area = 2764.4 ft²

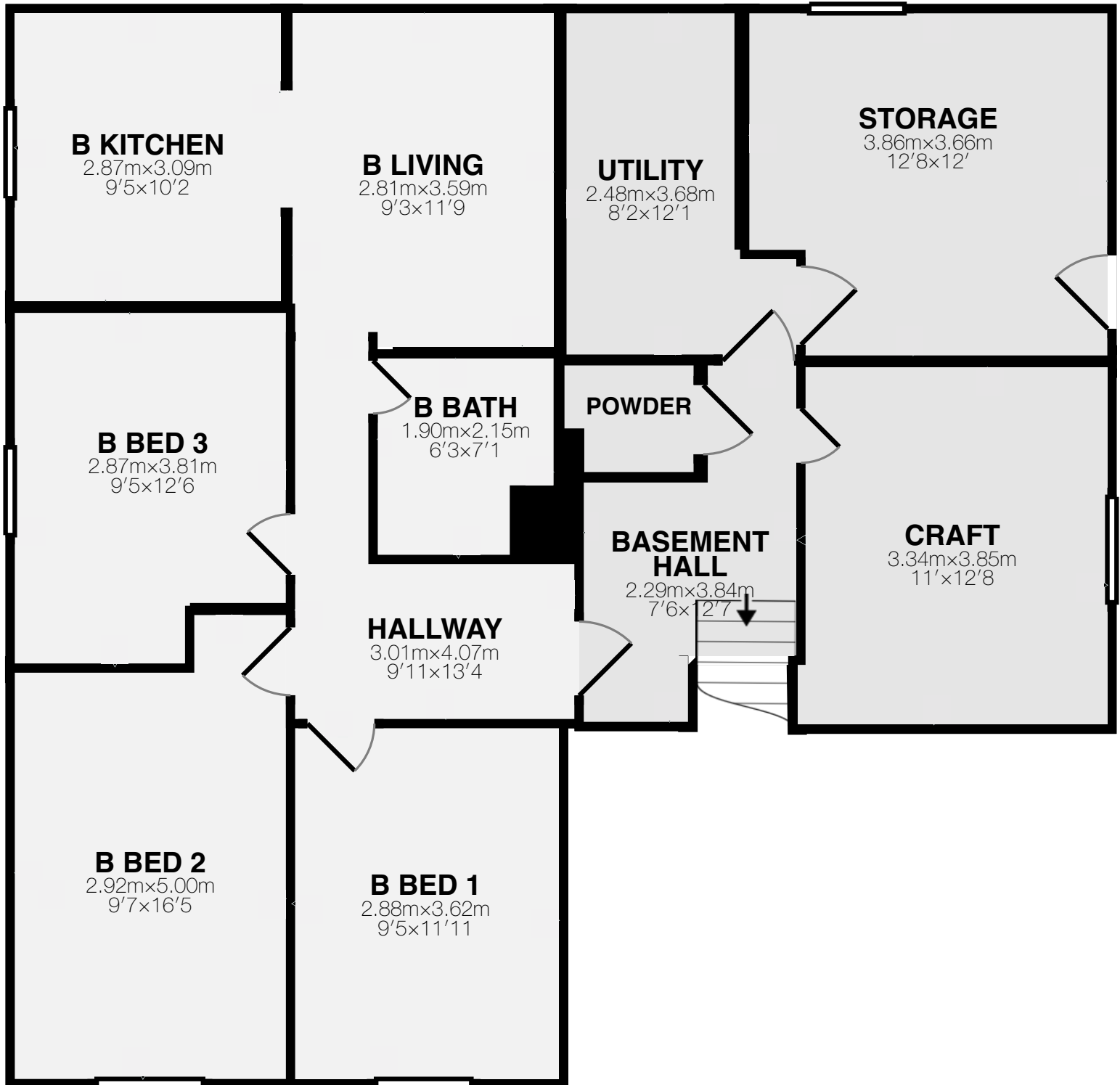
Total Exterior ft²

Approx Exterior Area (includes basement) = 3989.9 ft²

Lower Level (below grade)

Approx Interior Floor Area = 1132.7 ft²

Approx Exterior Area = 1225.5 ft²



Main Room Interior Measurements

	Imperial	Metric	Interior ft²
Main Floor (above grade)			
Living Room	19'11 x 12'2	6.08m x 3.70m	235.4 ft ²
Dining Room	15'5 x 12'10	4.71m x 3.90m	182.0 ft ²
Den	11'4 x 12'9	3.46m x 3.89m	154.9 ft ²
Dinette/Kitchen	22'8 x 12'3	6.90m x 3.73m	275.3 ft ²
Sitting Room	16'7 x 12'4	5.07m x 3.75m	198.2 ft ²
Family Room	18'5 x 17'	5.62m x 5.18m	313.3 ft ²
Upper Level (above grade)			
Bedroom 1	12'10 x 11'1	3.90m x 3.37m	125.1 ft ²
Bedroom 2	15'8 x 11'7	4.78m x 3.54m	157.1 ft ²
Bedroom 3	9' x 20'4	2.74m x 6.19m	145.7 ft ²
Bedroom 4	18'2 x 12'7	5.54m x 3.84m	195.3 ft ²
Lower Level (below grade)			
Bedroom 1	9'5 x 11'11	2.88m x 3.62m	112.2 ft ²
Bedroom 2	9'7 x 16'5	2.92m x 5.00m	144.5 ft ²
Bedroom 3	9'5 x 12'6	2.87m x 3.81m	110.3 ft ²
Kitchen	9'5 x 10'2	2.87m x 3.09m	95.3 ft ²
Living Room	9'3 x 11'9	2.81m x 3.59m	108.9 ft ²
Craft Room	11'2 x 12'8	3.34m x 3.85m	138.5 ft ²

Totals**Total Above Grade Exterior ft²**Approx Exterior Area = 2764.4 ft²**Total Exterior ft²**Approx Exterior Area (includes basement) = 3989.9 ft²

Rooms have irregular shapes and, as such, cannot be truly represented by one length and width. The length and width listed above are the longest length and width of the room. Because of this, room area is not always equal to the product of length and width but has been calculated in any floor area accurately using all wall measurements.

