

347 - 349 King St

Dundas, Ontario

Total Above Grade Exterior ft²

Approx Exterior Area = 1806.07 ft²

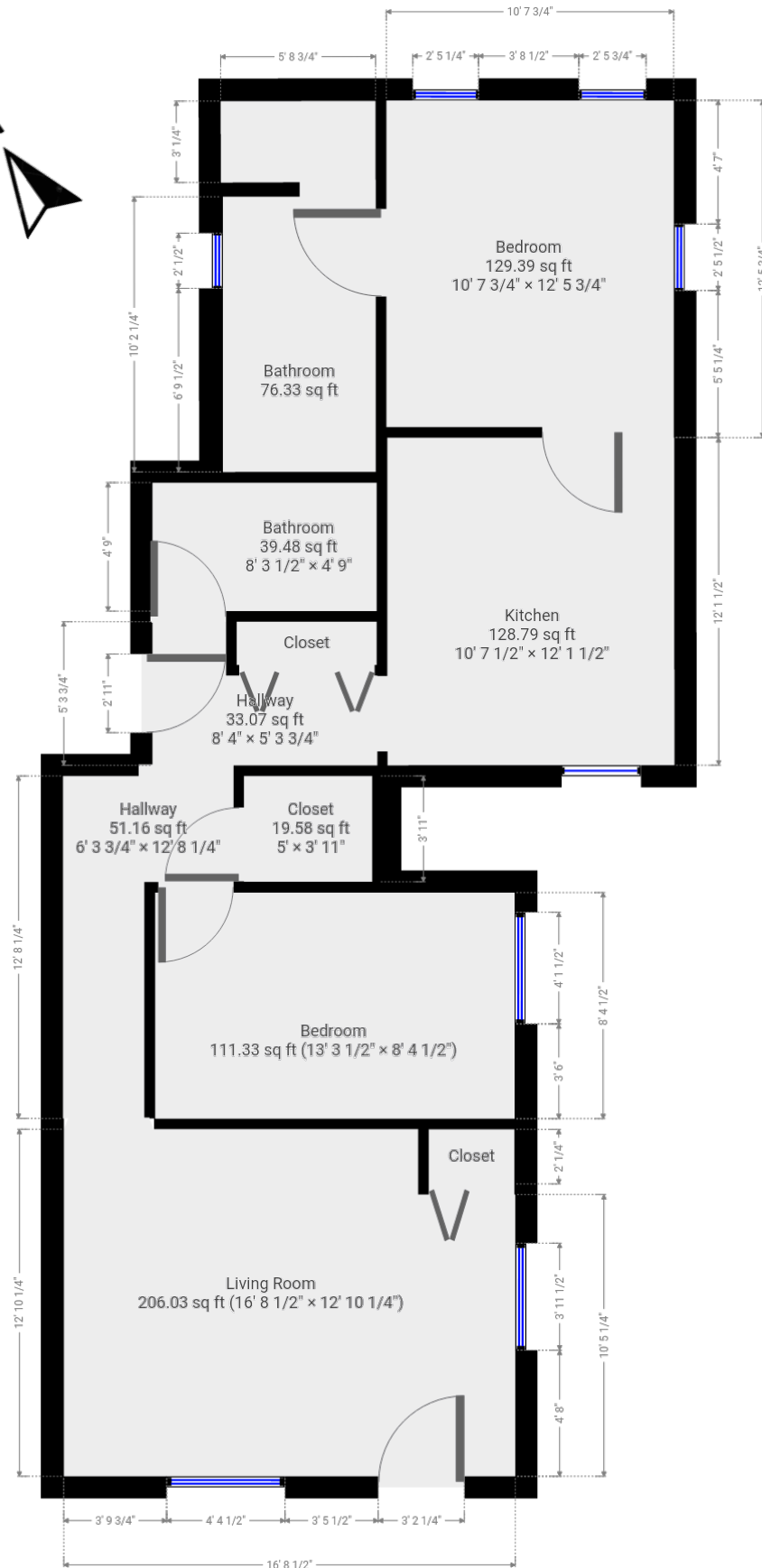
Total Exterior ft²

Includes basement (below grade)

Approx Exterior Area = 2912.90 ft²

Unit 347A (above grade)

Approx Interior Area = 821.59 ft²
Approx Exterior Area = 967.54 ft²



347 - 349 King St

Dundas, Ontario

Total Above Grade Exterior ft²

Approx Exterior Area = 1806.07 ft²

Total Exterior ft²

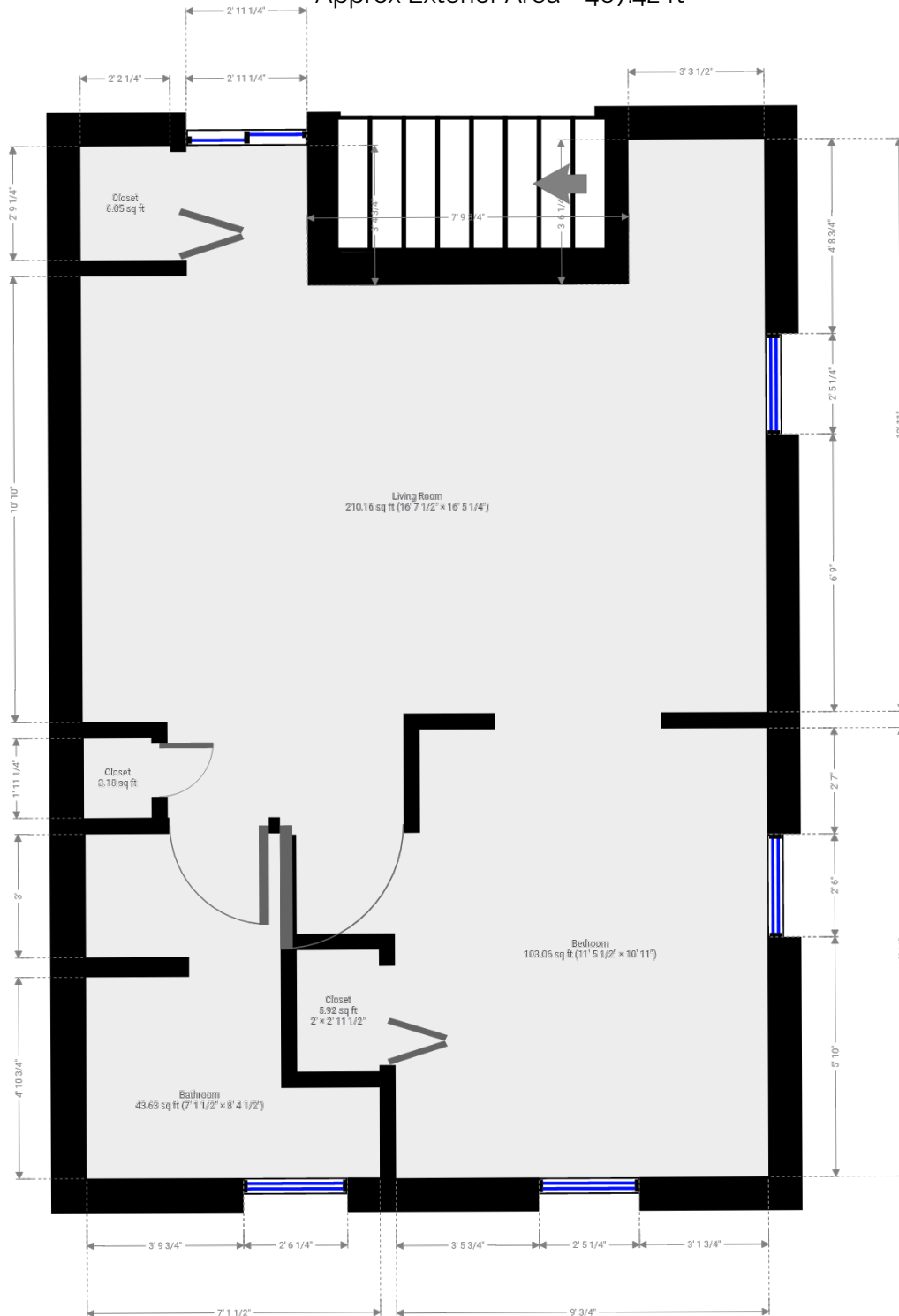
Includes basement (below grade)

Approx Exterior Area = 2912.90 ft²

Unit 347B (above grade)

Approx Interior Area = 390.49 ft²

Approx Exterior Area = 467.42 ft²



347 - 349 King St

Dundas, Ontario

Total Above Grade Exterior ft²

Approx Exterior Area = 1806.07 ft²

Total Exterior ft²

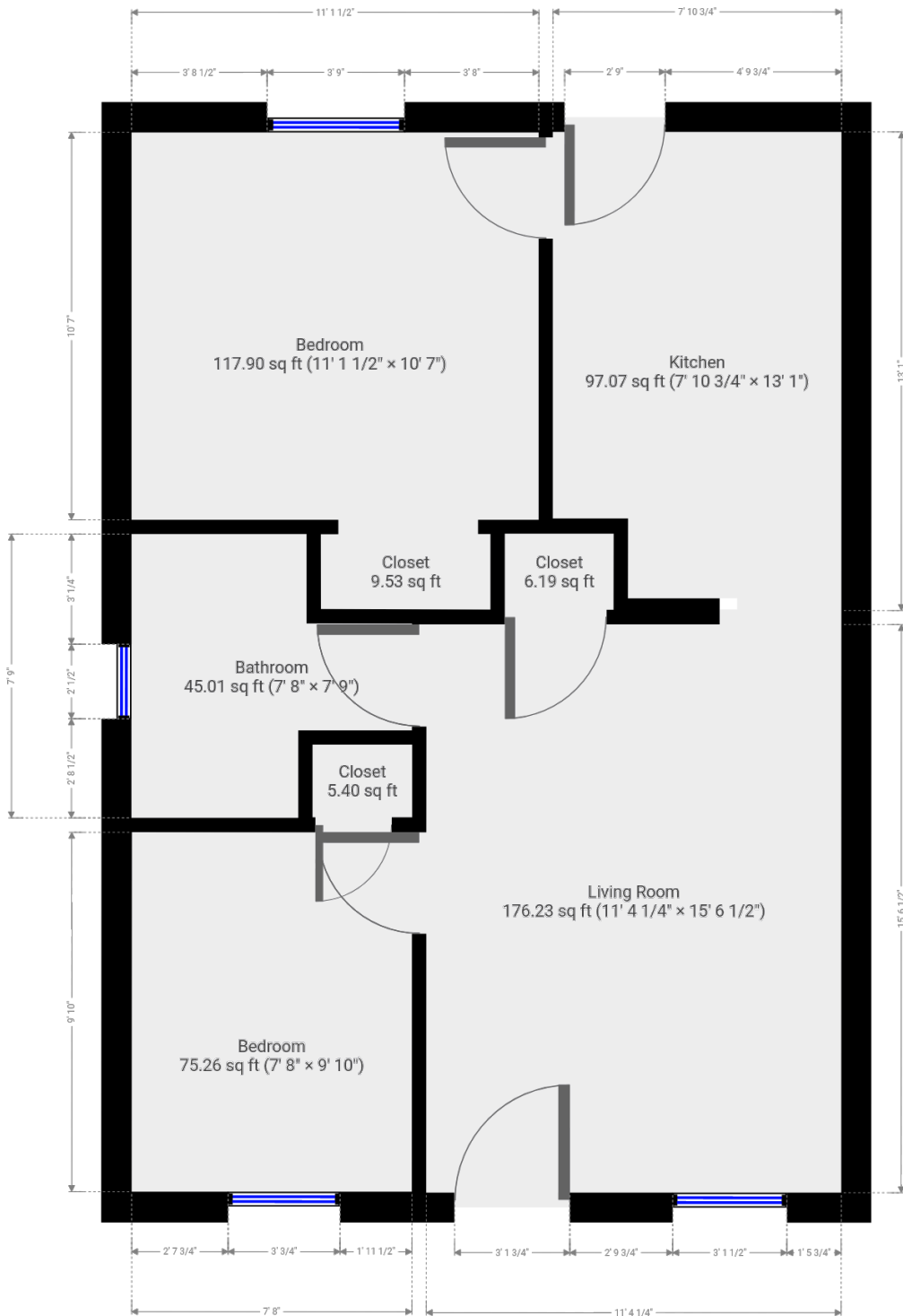
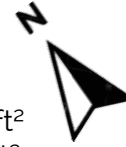
Includes basement (below grade)

Approx Exterior Area = 2912.90 ft²

Unit 349 (above grade)

Approx Interior Area = 310.54 ft²

Approx Exterior Area = 371.11 ft²



347 - 349 King St
Dundas, Ontario

Total Above Grade Exterior ft²

Approx Exterior Area = 1806.07 ft²

Total Exterior ft²

Includes basement (below grade)

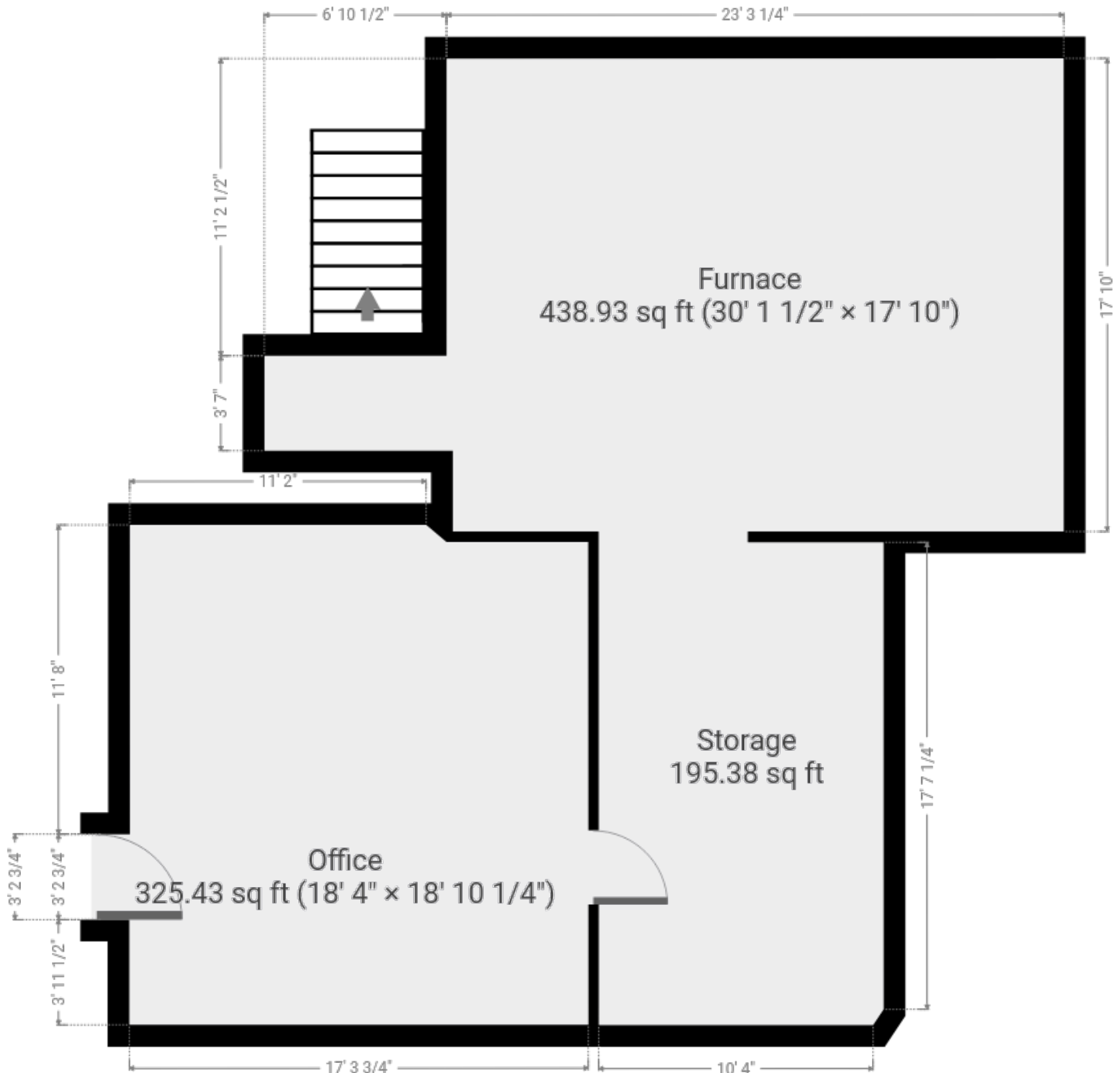
Approx Exterior Area = 2912.90 ft²

Unit 349 Basement
(below grade)



Approx Interior Area = 973.28 ft²

Approx Exterior Area = 1106.83 ft²



Main Room Interior Measurements

| | Imperial | Metric | Interior ft ² |
|--|--------------|----------------|--------------------------|
| Unit 347A (above grade) | | | |
| Approx Exterior ft² | | | |
| 967.54 ft² | | | |
| Living Room | 16'9 x 12'10 | 5.11 m x 3.91m | 206.03 ft ² |
| Bedroom | 13'4 x 8'5 | 4.06m x 2.57m | 111.33 ft ² |
| Kitchen | 10'8 x 12'2 | 3.25m x 3.71m | 128.79 ft ² |
| Bathroom | 8'4 x 4'9 | 2.54m x 1.45m | 39.48 ft ² |
| Bedroom | 10'8 x 12'6 | 3.25m x 3.81m | 129.39 ft ² |
| Ensuite | 5'9 x 13'8 | 1.75m x 4.17m | 76.10 ft ² |
| Unit 347B (above grade) | | | |
| Approx Exterior ft² | | | |
| 467.42 ft² | | | |
| Living Space | 16'8 x 16'5 | 5.08m x 5.00m | 210.16 ft ² |
| Bedroom | 11'6 x 10'11 | 3.51m x 3.32m | 103.06 ft ² |
| Bathroom | 7'2 x 8'5 | 2.18m x 2.57m | 43.63 ft ² |
| Unit 349 (above grade) | | | |
| Approx Exterior ft² | | | |
| 371.11 ft² | | | |
| Living Room | 11'4 x 15'7 | 3.45m x 4.75m | 176.23 ft ² |
| Bedroom | 7'8 x 9'10 | 2.34m x 3.00m | 75.26 ft ² |
| Bathroom | 7'8 x 7'9 | 2.34m x 2.36m | 45.01 ft ² |
| Kitchen | 7'11 x 13'1 | 2.41m x 3.41m | 97.07 ft ² |
| Bedroom | 11'2 x 10'7 | 3.40m x 3.23m | 117.90 ft ² |
| Unit 349 Basement (below grade) | | | |
| Approx Exterior ft² | | | |
| 1106.83 ft² | | | |
| Office | 18'4 x 18'10 | 5.49m x 5.64m | 325.43 ft ² |
| Storage | 10'4 x 17'7 | 3.15m x 5.36m | 195.38 ft ² |
| Furnace Room | 30'2 x 17'10 | 9.19m x 5.44m | 438.93 ft ² |

Total**Total Above Grade Exterior ft²**Approx Exterior Area = 1806.07 ft²**Total Exterior ft²****Includes basement (below grade)**Approx Exterior Area = 2912.90 ft²

Rooms have irregular shapes and, as such, cannot be truly represented by one length and width. The length and width listed above are the longest length and width of the room. Because of this, room area is not always equal to the product of length and width but has been calculated in any floor area accurately using all wall measurements.

